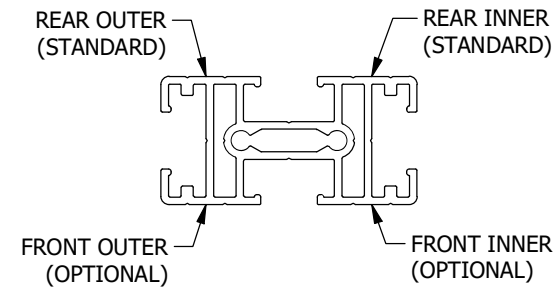
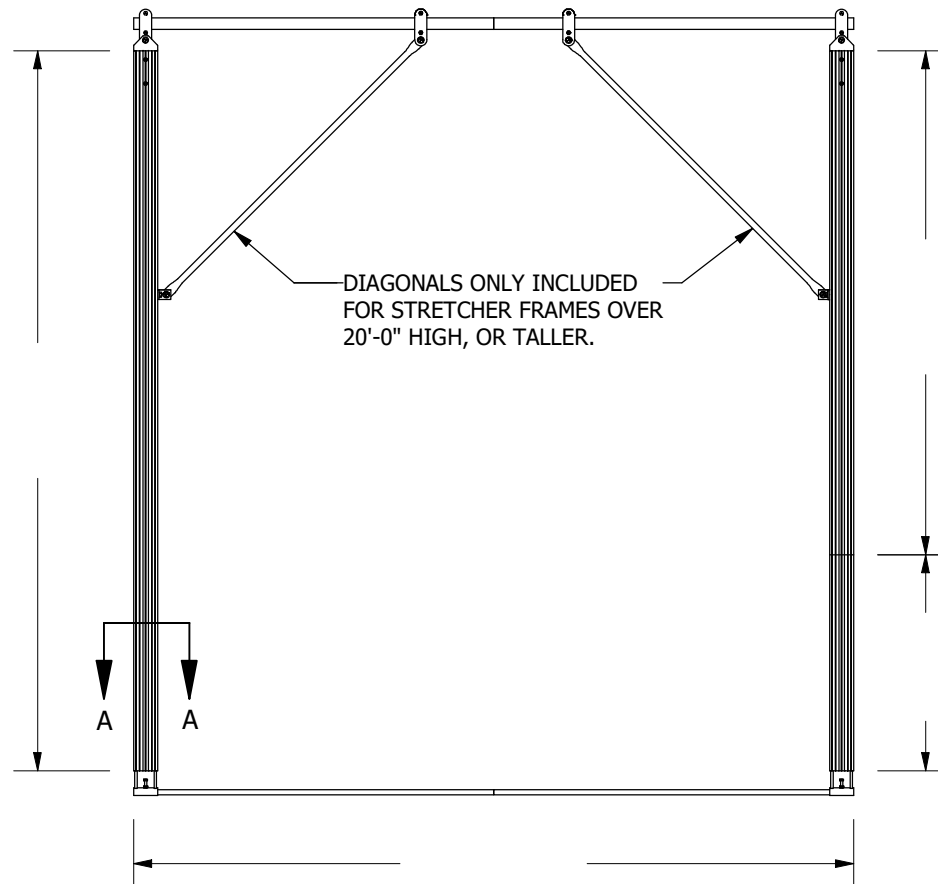


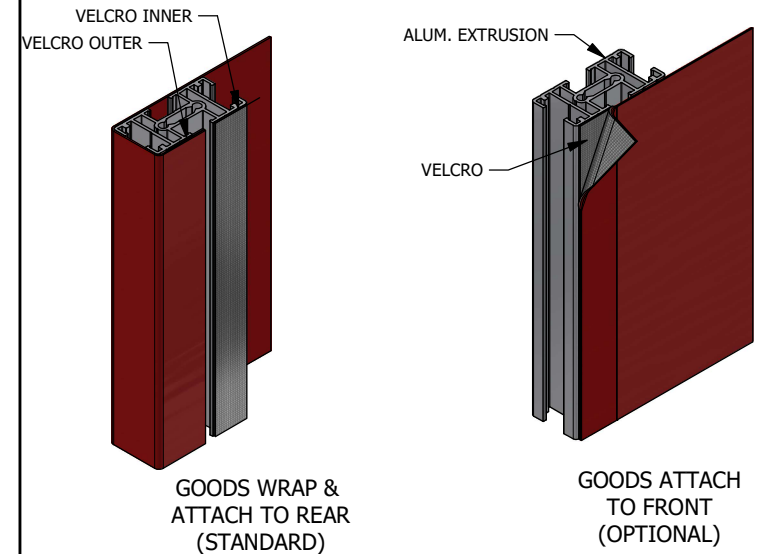
2

1



**NOTES:**  
-REVERSE & REPEAT

**A** VELCRO LOCATION  
SCALE: 4" = 1'-0"



\*\*\*COLOR OF GOODS WILL VARY\*\*\*

VELCRO ATTACHMENT EXAMPLES

SCALE: NTS

This drawing represents visual concepts and construction suggestions only. Please review construction methods and material details for suitability. Final approval is required before construction can begin. Please contact Rose Brand to discuss alterations to the project.



# ROSE BRAND

PO BOX 1536 SECAUCUS, NJ 07096

800-223-1624 RoseBrand.com

All Dimensions in Inches (in) unless stated otherwise.

Tolerances:

X =  $\pm 0.2$   
.0X =  $\pm 0.01$   
.00X =  $\pm 0.005$   
.000X =  $\pm 0.0005$

X/X =  $\pm 1/16"$   
< =  $\pm 1/2"$

Unless stated otherwise.

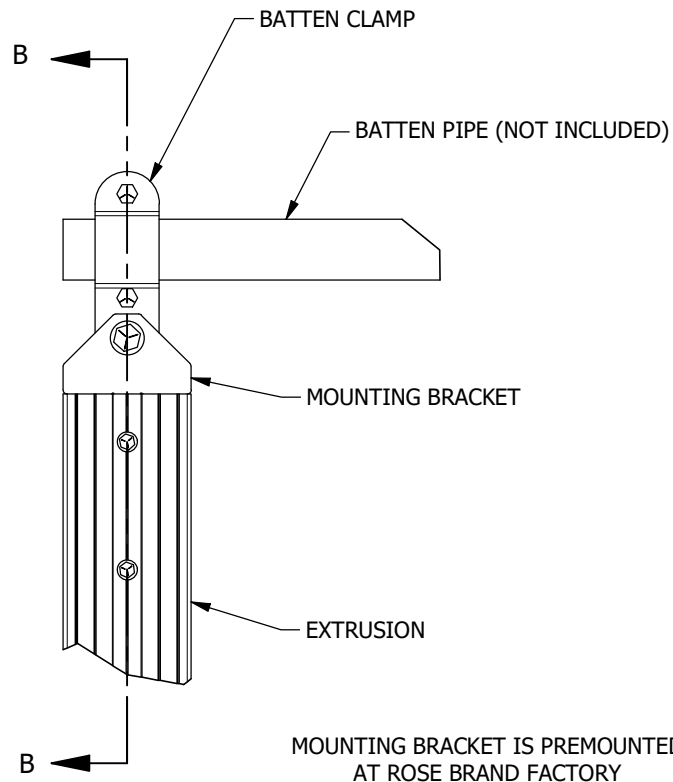
CLIENT		PROJECT	
ROSE BRAND		STRETCHER FRAME SYSTEM	
TITLE			
OVERVIEW			
SIZE	DWG NO		REV
A	RB-Stretcher Frame Overview Packet - Final		A
SCALE	DRAWN BY	DATE	
AS NOTED	D. GUADAGNINO	7/24/2024	Sheet 1 of 6

2

1

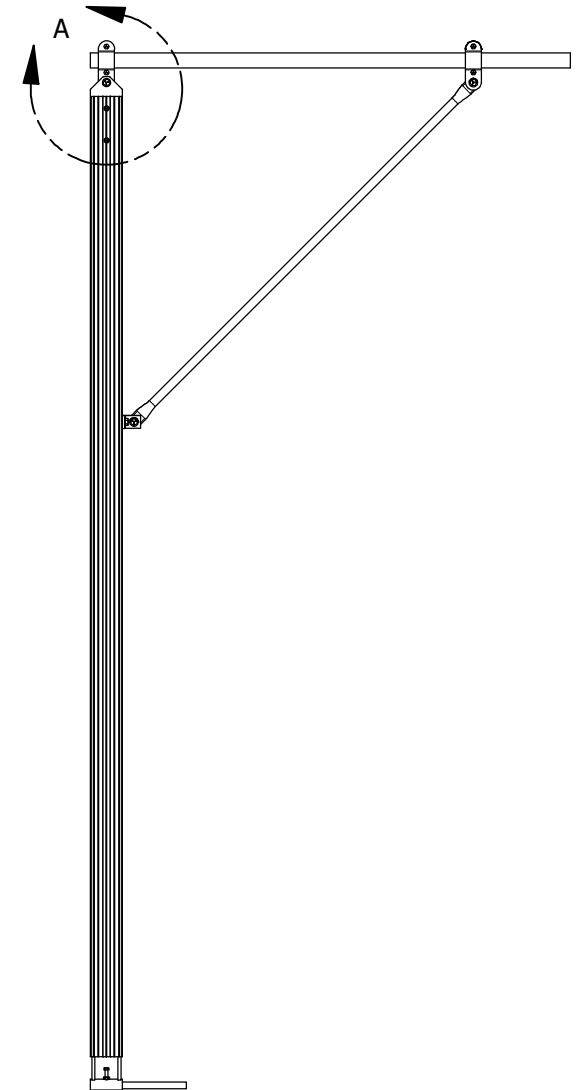
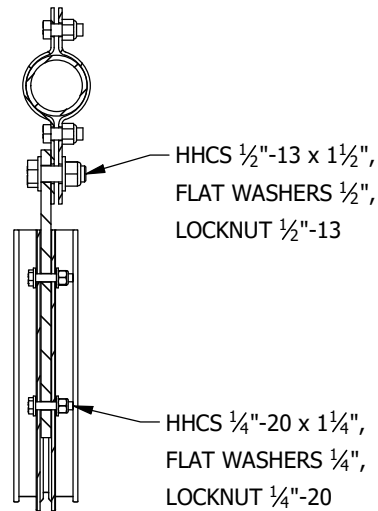
2

1



DETAIL: A  
SCALE: 2" = 1'-0"

SECTION: B-B  
SCALE: 2" = 1'-0"



STRETCHER FRAME ASSEMBLY: FRONT VIEW  
SCALE: 1/2" = 1'-0"

This drawing represents visual concepts and construction suggestions only. Please review construction methods and material details for suitability. Final approval is required before construction can begin. Please contact Rose Brand to discuss alterations to the project.



# ROSE BRAND

PO BOX 1536 SECAUCUS, NJ 07096

800-223-1624 RoseBrand.com

All Dimensions in Inches (in) unless stated otherwise.

Tolerances:

X = ±0.2  
.0X = ±0.01  
.00X = ±0.005  
.000X = ±0.0005

X/X = ± 1/16"  
∠ = ± 1/2"

Unless stated otherwise.

P&S: CLIENT		ROSE BRAND		PROJECT		STRETCHER FRAME SYSTEM	
TITLE							
MOUNTING BRACKET INSTALL							
SIZE		DWG NO		REV			
A		RB-Stretcher Frame Overview Packet - Final				A	
SCALE		DRAWN BY		DATE		Sheet 2 of 6	
AS NOTED		D. GUADAGNINO		7/24/2024			

2

1

2

1

B

B

TROMBONE LEGS INSERT INTO  
SLOTS ON SIDE OF EXTRUSION

IF FABRIC IS BEING LACED TO  
THE OUTER OR INNER FACE  
REMOVE LOWER SET SCREW  
AND REPLACE WITH  
HHCS  $\frac{3}{8}$ "-16 x  $1\frac{1}{4}$ "

TROMBONE RECIEVER  
OFFSETS TOWARD FRONT

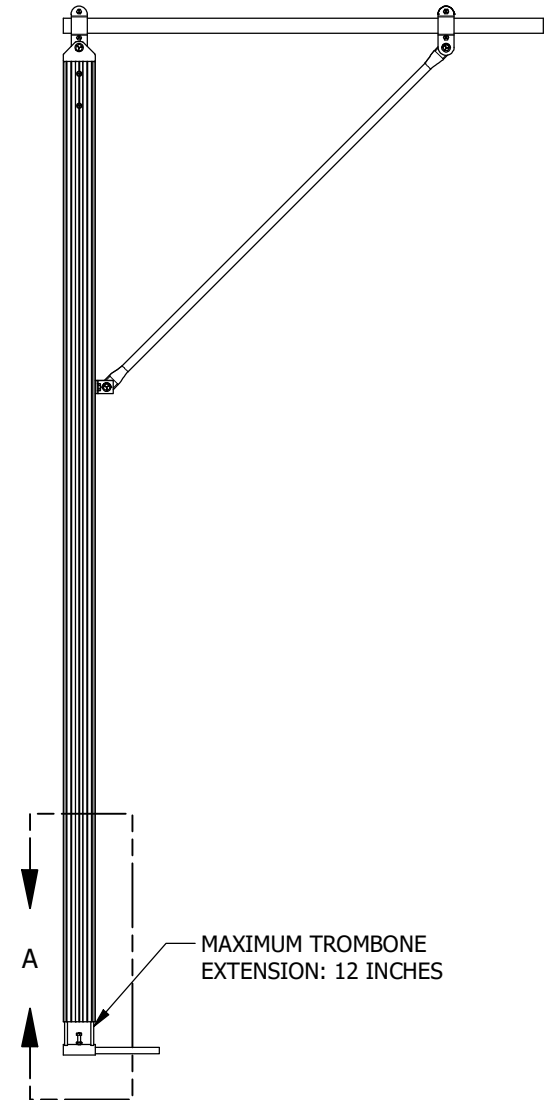
TROMBONE IS PREMOUNTED  
AT ROSE BRAND FACTORY

DETAIL: A  
SCALE:  $1\frac{1}{2}$ " = 1'-0"

EXTRUSION

TROMBONE

BOTTOM PIPE



STRETCHER FRAME ASSEMBLY: FRONT VIEW  
SCALE:  $1\frac{1}{2}$ " = 1'-0"

This drawing represents visual concepts and construction suggestions only. Please review construction methods and material details for suitability. Final approval is required before construction can begin. Please contact Rose Brand to discuss alterations to the project.



# ROSE BRAND

PO BOX 1536 SECAUCUS, NJ 07096

800-223-1624 RoseBrand.com

All Dimensions in Inches (in) unless stated otherwise.

Tolerances:

X =  $\pm 0.2$  X/X =  $\pm 1/16$ "  
.0X =  $\pm 0.01$  < =  $1/2$ "  
.00X =  $\pm 0.005$   
.000X =  $\pm 0.0005$

Unless stated otherwise.

CLIENT ROSE BRAND		PROJECT STRETCHER FRAME SYSTEM	
TITLE TROMBONE INSTALL			
SIZE A	DWG NO RB-Stretcher Frame Overview Packet - Final		REV A
SCALE AS NOTED	DRAWN BY D. GUADAGNINO	DATE 7/24/2024	Sheet 3 of 6

2

1

A



2

1

BATTEN PIPE (NOT INCLUDED)

DIAGONAL BRACE

BATTEN CLAMP

DETAIL: A

SCALE: 1 1/2" = 1'-0"

DIAGONAL BRACE

L-BRACKET

EXTRUSION

DETAIL: B

SCALE: 1 1/2" = 1'-0"

SECTION: C-C

SCALE: 3" = 1'-0"

STRETCHER FRAME ASSEMBLY: FRONT VIEW

SCALE: 1/2" = 1'-0"

\*\*\* DIAGONALS ONLY INCLUDED FOR STRETCHER FRAMES OVER 20'-0" HIGH, OR TALLER. \*\*\*

This drawing represents visual concepts and construction suggestions only. Please review construction methods and material details for suitability. Final approval is required before construction can begin. Please contact Rose Brand to discuss alterations to the project.



# ROSE BRAND

PO BOX 1536 SECAUCUS, NJ 07096

800-223-1624 RoseBrand.com

All Dimensions in Inches (in) unless stated otherwise.

## Tolerances:

.X =  $\pm 0.2$       X/X =  $\pm 1/16"$   
 .0X =  $\pm 0.01$        $\angle$  =  $\pm 1/2"$   
 .00X =  $\pm 0.005$   
 .000X =  $\pm 0.0005$

Unless stated otherwise.

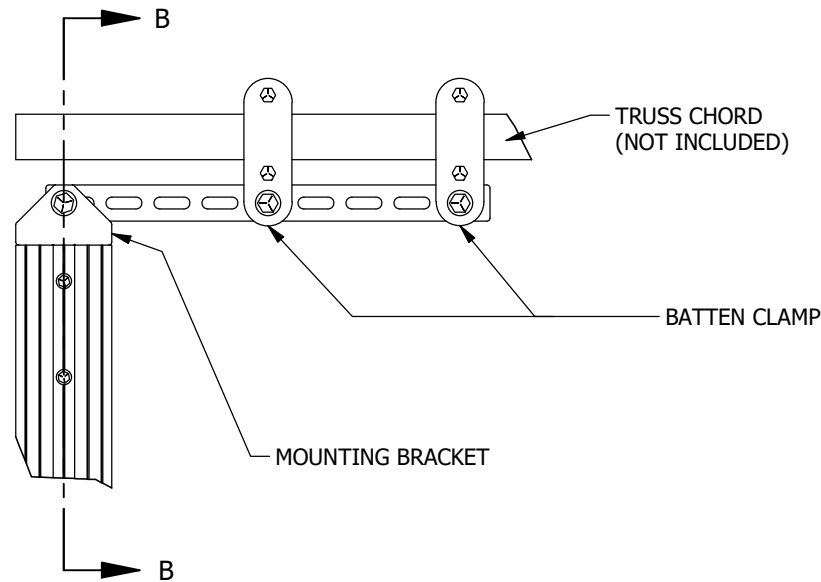
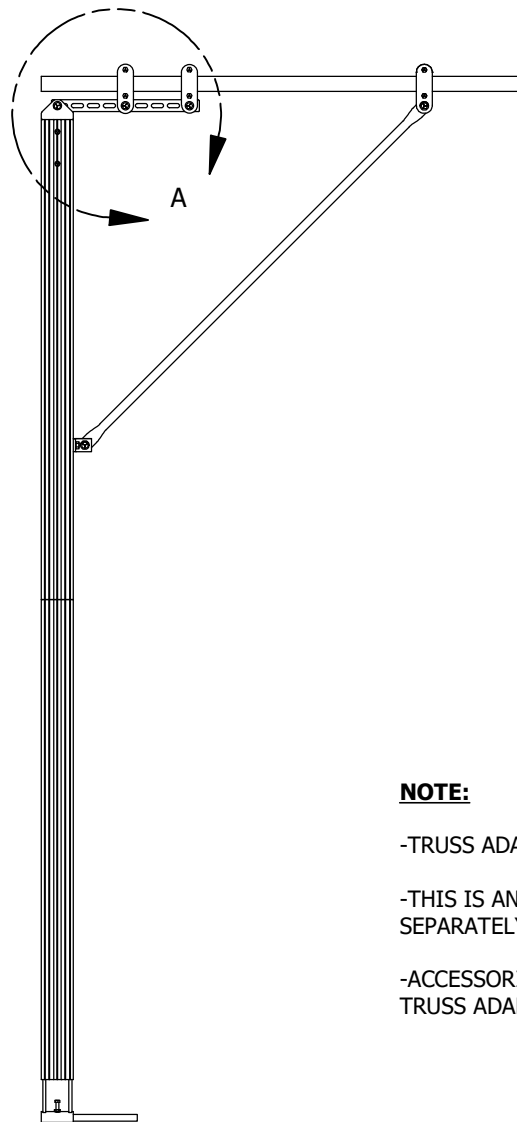
CLIENT		PROJECT	
ROSE BRAND		STRETCHER FRAME SYSTEM	
TITLE			
DIAGONAL BRACE INSTALL (OPTIONAL)			
SIZE		DWG NO	
A		RB-Stretcher Frame Overview Packet - Final	
SCALE		REV	
AS NOTED		A	
DRAWN BY		DATE	
D. GUADAGNINO		7/24/2024	
Sheet 5		of 6	

2

1

2

1

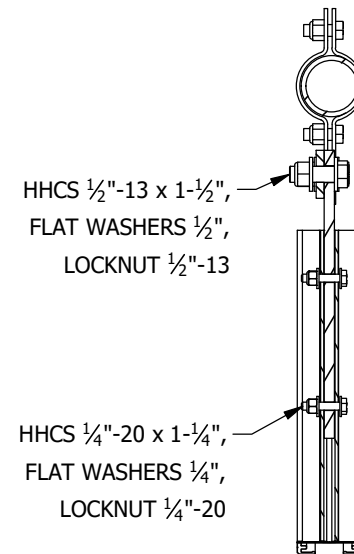


DETAIL A  
SCALE 1 1/2" = 1'-0"

**NOTE:**

- TRUSS ADAPTER REPLACES SINGLE BATTEN CLAMP
- THIS IS AN OPTIONAL ACCESSORY AND MUST BE ORDERED SEPARATELY.
- ACCESSORIES INCLUDE ADDITIONAL BATTEN CLAMP AND TRUSS ADAPTER PLATE WITH HARDWARE.

STRETCHER FRAME ASSEMBLY: FRONT VIEW  
SCALE: 1/2" = 1'-0"



SECTION B-B  
SCALE 2" = 1'-0"

This drawing represents visual concepts and construction suggestions only. Please review construction methods and material details for suitability. Final approval is required before construction can begin. Please contact Rose Brand to discuss alterations to the project.



**ROSE BRAND**

PO BOX 1536 SECAUCUS, NJ 07096

800-223-1624 RoseBrand.com

All Dimensions in Inches (in) unless stated otherwise.

**Tolerances:**

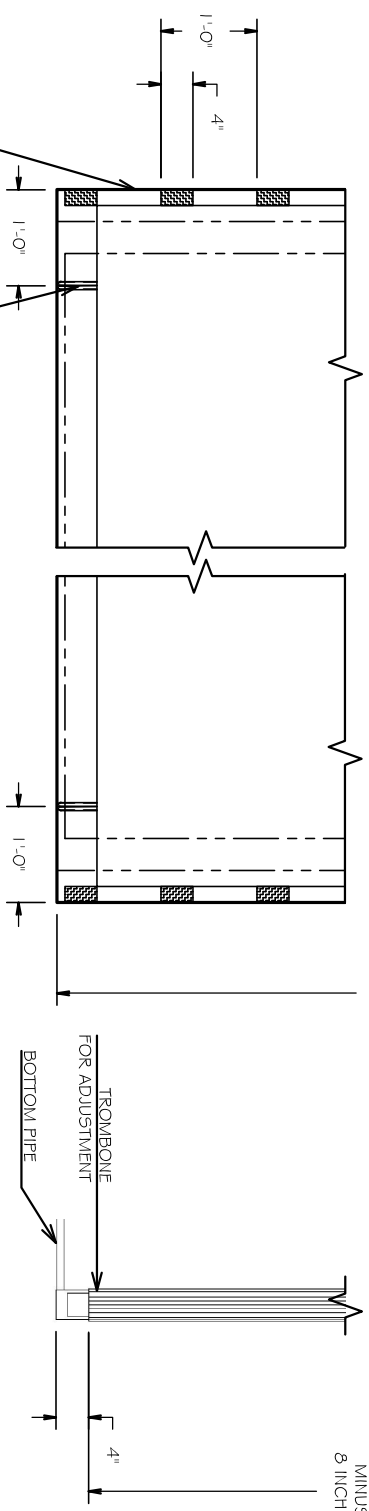
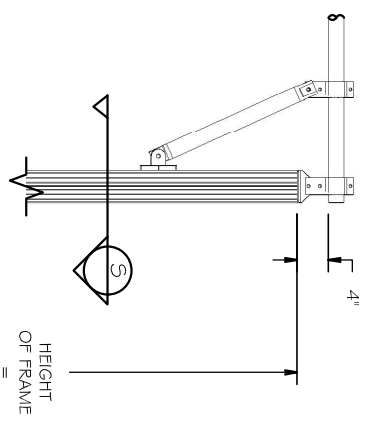
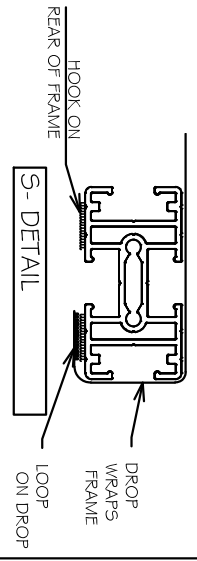
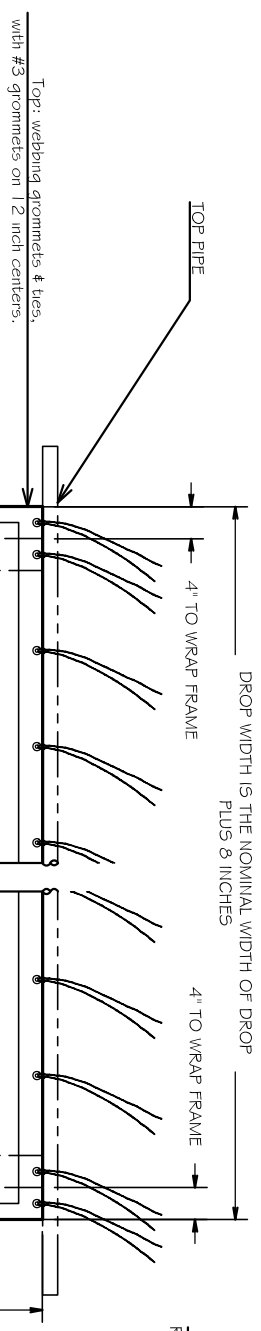
X	= ±0.2	X/X	= ± 1/16"
.0X	= ±0.01	∠	= ± 1/2"
.00X	= ±0.005		
.000X	= ±0.0005		

Unless stated otherwise.

CLIENT ROSE BRAND		PROJECT STRETCHER FRAME SYSTEM	
TITLE TRUSS ADAPTER INSTALL (OPTIONAL)			
SIZE A	DWG NO RB-Stretcher Frame Overview Packet - Final		REV A
SCALE AS NOTED	DRAWN BY D. GUADAGNINO	DATE 7/24/2024	Sheet 6 of 6

2

1



Stage LEFT (AND SR): Velcro, 2 in. female Velcro on back 2" X 4" TABS ON 12" CENTERS

Bottom: Pipe hem lined w/ slit (stretcher frame), 5 in. PLACE SLIT 12" FROM THE SIDE.

**DROP WRAPS FRAME**

**DROP FOR STRETCHER FRAME**

**SCHEMATIC REAR VIEW**

SCALE: 1/2" = 1'-0"

**PART DESCRIPTION**

TYPICAL STRETCHER FRAME DROP

Material: AS SPECIFIED

HEIGHT OF DROP IS THE SPECIFIED HEIGHT OF THE DROP WIDTH OF THE DROP IS THE SPECIFIED WIDTH PLUS 8"

With 0% Added Fullness, Unlined

Top: webbing grommets & ties, with #3 grommets on 12 inch centers.

Bottom: Pipe hem lined w/ slit (stretcher frame), 5 in. PLACE SLIT 12" FROM THE SIDE.

Stage Right: Velcro, 2 in. female Velcro on back 2" X 4" TABS ON 12" CENTERS

Stage Left: Velcro, 2 in. female Velcro on back 2" X 4" TABS ON 12" CENTERS

CUSTOMER: ROSE BRAND	6/25/2024
PROJECT: STRETCHER FRAME	
PIECE: TYPICAL SEWING DETAILS	
SCALE: AS NOTED	DRAWN BY: T SULLIVAN

**ROSE BRAND**

PO BOX 1536 SECAUCUS, NJ 07096

800-223-1624

rosebrand.com

This drawing represents visual concepts and construction suggestions only. Please review construction methods and material details for suitability. Final approval is required before construction can begin. Please contact Rose Brand to discuss alterations to the project.

QUOTE:

ORDER:

LINE: DROP WRAPS FRAME

PAGE PAGE 1

REV: A

PRINT ON: 8 1/2 x 11 (LETTER PAPER)

5

0 FEET

5

10

0 METERS

TOP PIPE

DROP WIDTH IS THE NOMINAL WIDTH OF DROP

Top: webbing grommets & ties,  
with #3 grommets on 12 inch centers.

4"  
FRAME4"  
FRAMEHEIGHT  
OF  
DROP

1'-0"

4"

8"

8"

Bottom: Pipe hem lined w/ slit (stretcher frame), 5 in.  
PLACE SLIT 8" FROM THE SIDE.

Stage LEFT (AND SR):

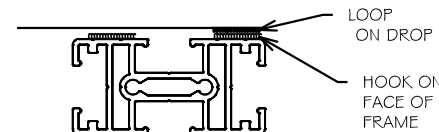
Velcro, 2 in. female Velcro on back  
2" X 4" TABS ON 12" CENTERS

VELCRO TO FACE OF FRAME

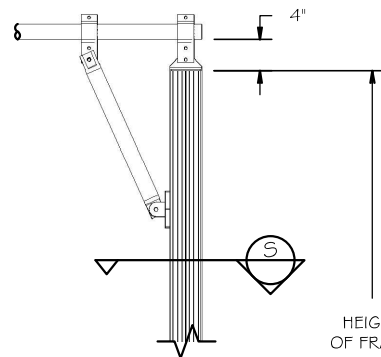


## DROP FOR STRETCHER FRAME SCHEMATIC REAR VIEW

SCALE: 1/2"=1'-0"



S- DETAIL



HEIGHT  
OF FRAME  
=  
HEIGHT OF  
DROP  
MINUS  
8 INCHES

TROMBONE  
FOR ADJUSTMENT

BOTTOM PIPE

## PART DESCRIPTION

TYPICAL STRETCHER FRAME DROP

Material: AS SPECIFIED

HEIGHT OF DROP IS THE SPECIFIED HEIGHT OF THE DROP  
WIDTH OF THE DROP IS THE SPECIFIED WIDTH PLUS + 8"

With 0% Added Fullness, Unlined

Top: webbing grommets &amp; ties, with #3 grommets on 12 inch centers.

Bottom: Pipe hem lined w/ slit (stretcher frame), 5 in.

PLACE SLIT 8" FROM THE SIDE.

Stage Right: Velcro, 2 in. female Velcro on back

2" X 4" TABS ON 12" CENTERS

Stage Left: Velcro, 2 in. female Velcro on back

2" X 4" TABS ON 12" CENTERS

This drawing represents visual concepts and construction suggestions only. Please review construction methods and material details for suitability. Final approval is required before construction can begin. Please contact Rose Brand to discuss alterations to the project.

**ROSE BRAND**  
PO BOX 1536 SECAUCUS, NJ 07096  
800-223-1824 rosebrand.com

CUSTOMER: ROSE BRAND  
PROJECT: STRETCHER FRAME  
PIECE: TYPICAL SEWING DETAILS  
SCALE: AS NOTED DRAWN BY: T SULLIVAN 6/25/2024

QUOTE:

ORDER:

LINE: VELCRO TO FACE OF FRAME

PAGE: PAGE 2

REV: A

PRINT ON: 8 1/2 x 11 (LETTER PAPER)



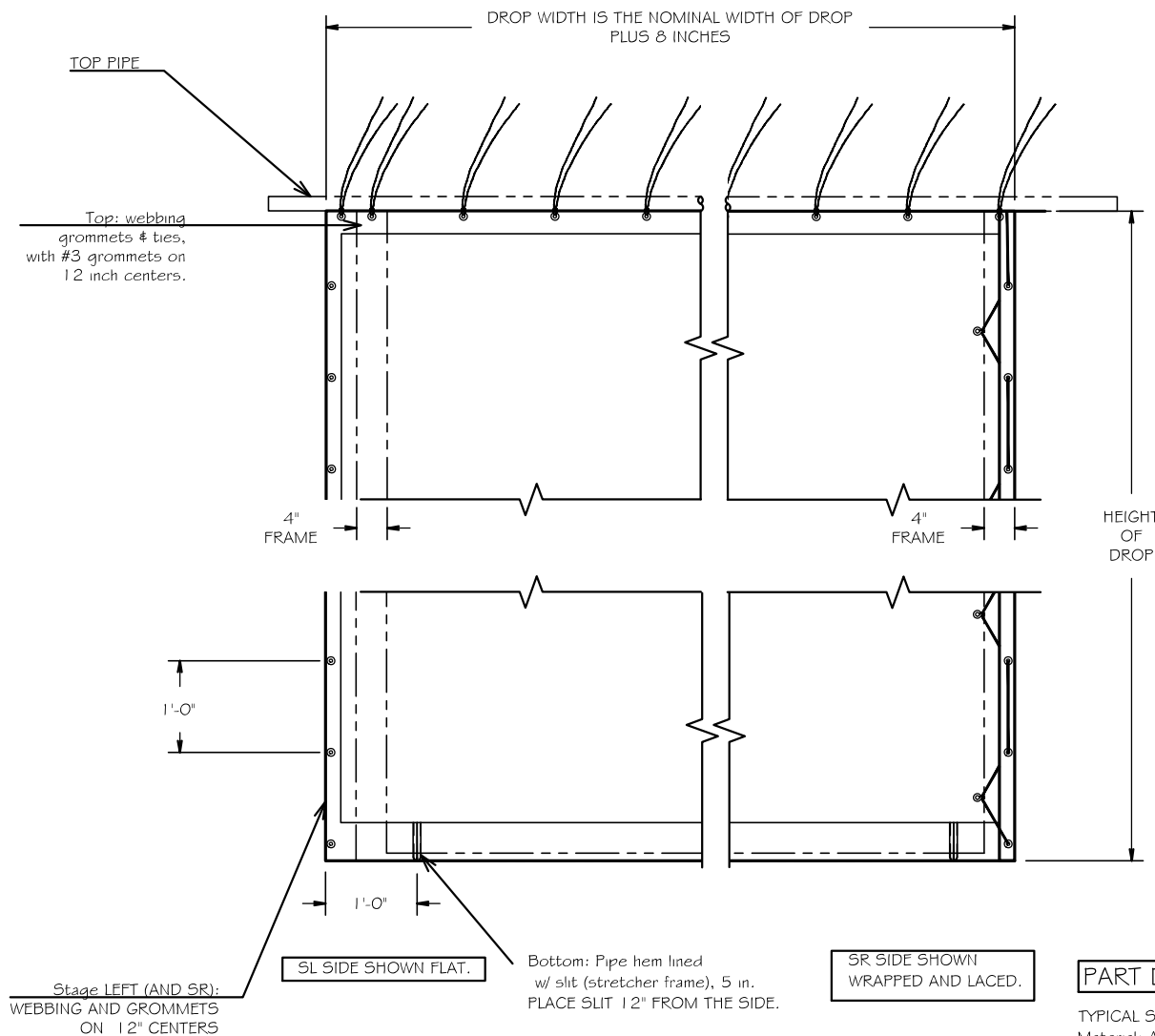
5

0 FEET

5

10

0 METERS



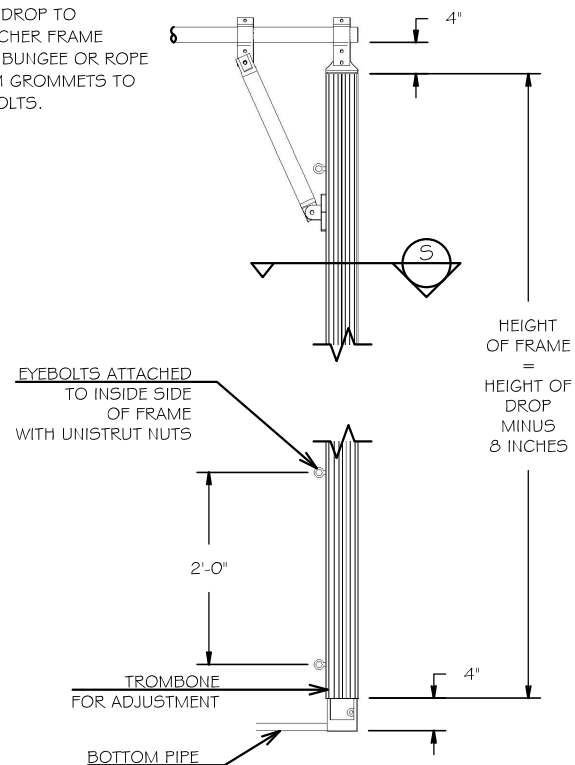
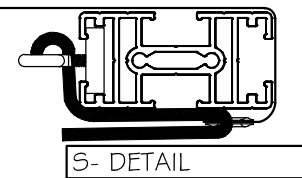
LACE TO FRAME

DROP FOR STRETCHER FRAME  
SCHEMATIC REAR VIEW

SCALE: 1/2"=1'-0"



LACE DROP TO  
STRETCHER FRAME  
WITH BUNGEE OR ROPE  
FROM GROMMETS TO  
EYEBOLTS.



## PART DESCRIPTION

TYPICAL STRETCHER FRAME DROP

Material: AS SPECIFIED

HEIGHT OF DROP IS THE SPECIFIED HEIGHT OF THE DROP  
WIDTH OF THE DROP IS THE SPECIFIED WIDTH PLUS + 8"

With 0% Added Fullness, Unlined

Top: webbing grommets &amp; ties, with #3 grommets on 12 inch centers.

Bottom: Pipe hem lined w/ slit (stretcher frame), 5 in.

PLACE SLIT 1 2" FROM THE SIDE.

Stage Right: WEBBING AND GROMMETS ON 12" CENTERS

Stage Left: WEBBING AND GROMMETS ON 12" CENTERS

This drawing represents visual concepts and construction suggestions only. Please review construction methods and material details for suitability. Final approval is required before construction can begin. Please contact Rose Brand to discuss alterations to the project.

**ROSE BRAND**  
PO BOX 1536 SECAUCUS, NJ 07096  
800-223-1824 rosebrand.com

CUSTOMER: ROSE BRAND  
PROJECT: STRETCHER FRAME  
PIECE: TYPICAL SEWING DETAILS  
SCALE: AS NOTED DRAWN BY: T SULLIVAN  
6/25/2024

QUOTE:

ORDER:

LINE: LACE TO FRAME

PAGE: PAGE 3

REV: A

PRINT ON: 8 1/2 x 11 - (LETTER PAPER)