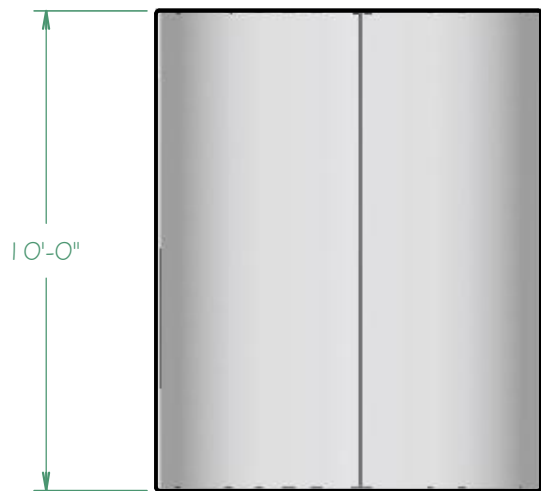


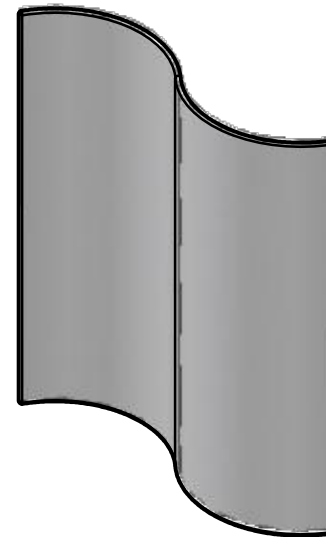
TOP VIEW



FRONT VIEW



SIDE VIEW



ISOMETRIC VIEW

Extremely easy set up. Lightweight, portable and sturdy frames are constructed from 1-1/4" diameter clear anodized aluminum tubing with satin finish. Use at your next corporate event or trade show exhibit.
Travel Bag included.

Geometric Display walls area available in 3 styles. All three styles can be used together. Connect multiple pieces together for dynamic designs.

The Light weight aluminum frames have covers that are constructed out of IFR Boost, IFR Boost with Lining and Digitally printed fabric.

See Catalog and Website for further details.

Note: Given the nature of fabrics with elastic properties, there will always be minor variations in constructed stretch shapes. Our drawings are visual representations to assist with your designs and concepts: the drawings should not, however, be used for engineering purposes.

Geometric Display Walls - Wave Wall 10ft x 8ft