

LEG-A-MATIC™

Patent Pending



The **LEG-A-MATIC™** System creates permanent pockets for any height 2 x 4 leg with infinite capacity to change!

Set-up and strike your platforms with ease using the **LEG-A-MATIC™** System.

This system is unique in that it was designed to reinforce stock platforms and make leg-changing quick and clean.

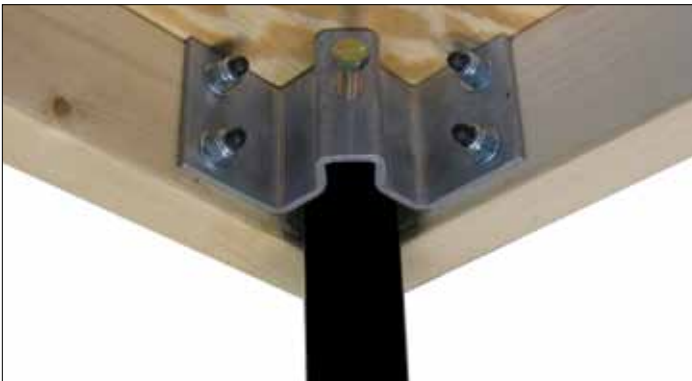
There are no moving parts, no redundancy of hardware, no wasting time.

Made of high grade 6061-T6 aluminum the **LEG-A-MATIC™** will outlive even the best-made platforms!

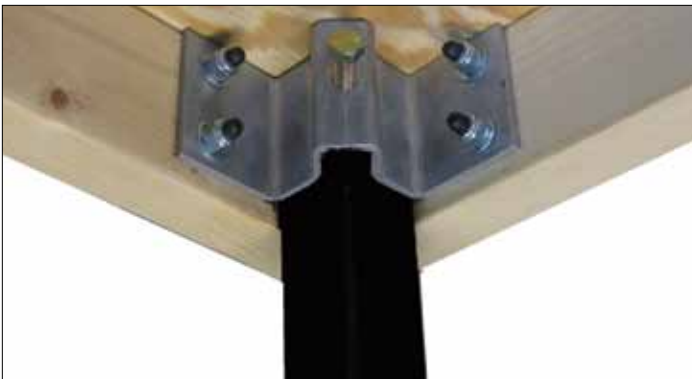
LEG-A-MATIC II™

1½" Steel Pipe

Patented



2" Square Tube



This system is designed solely to reinforce stock platforms and make leg-changing easy.

Each **LEG-A-MATIC II™** has pre-drilled holes so it can be bolted securely (using ⅜" diameter bolts) to the underside of any industry-standard wood/metal platform.

The **LEG-A-MATIC II™** System creates permanent pockets for any height 1½" SCH 40 or 2" steel box tube leg with infinite capacity to change leg height.

Save time on load-ins and strikes with fast one bolt lock down and release. Great for tours and storage. Strong, high grade 6061-T6 aluminum ensures **LEG-A-MATIC II™** is in for the long haul!

Made in the USA 

 **ROSE BRAND**

NJ 800.223.1624 CA 800.360.5056 RoseBrand.com

LAM Pak

We are proud to offer the **LAM (LEG-A-MATIC™) Hardware Pak** for installing **LEG-A-MATIC™** to the platform.

Pak includes 4 each: Gr 8 3/8"-16 x 2-1/2" Alloy Steel FH hex key Bolt, 3/8"-16 Zinc Plated Nylon Insert Locking Nut, 3/8" Zinc Plated SAE Flat Washer.



INSTALLING YOUR LEG-A-MATIC™



Get set up.



Clamp the **LEG-A-MATIC™** in place.



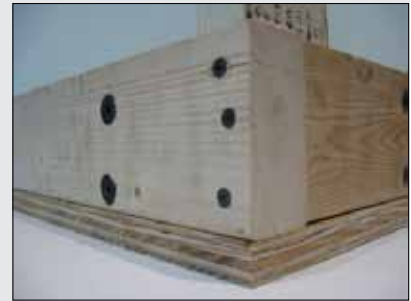
Using the **LEG-A-MATIC™** as a template, drill four holes using a 1 3/32" drill bit.



Bolt to unit using 3/8" flat head stove bolts, Nylock nuts, and washers.



Now simply screw the leg in and you're ready to go!



Very clean looking and will last and last.

INSTALLING YOUR LEG-A-MATIC II™



Get set up.



Clamp the **LEG-A-MATIC II™** in place.



Using the **LEG-A-MATIC II™** as a template, drill four holes using a 1 3/32" drill bit.



Bolt to unit using 3/8" flat head stove bolts, Nylock nuts, and washers.



Tighten center bolt to pipe or tube.



Very clean looking and will last and last.