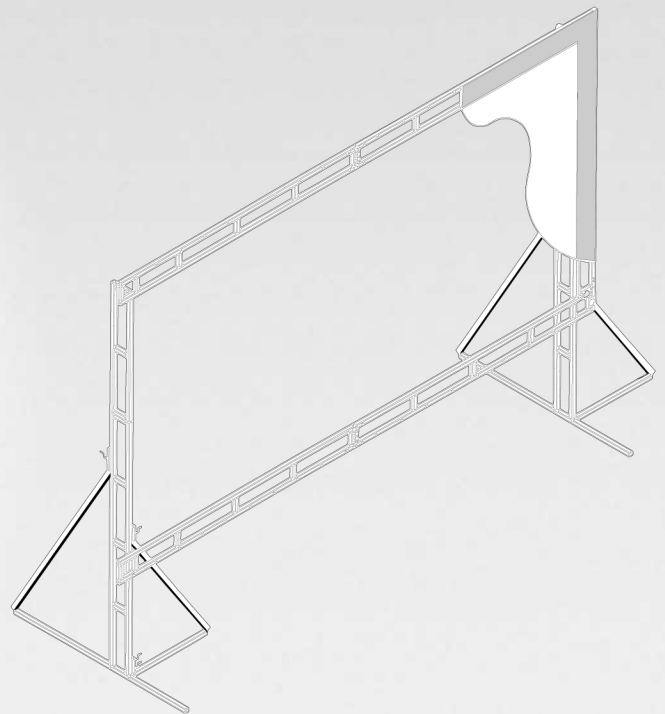


The Da-Lite Difference.




Instruction Book for **FAST-FOLD® TRUSS FRAME**



DA-LITE SCREEN COMPANY, INC.
3100 North Detroit Street
Post Office Box 137
Warsaw, Indiana 46581-0137
www.da-lite.com
e-mail: info@da-lite.com

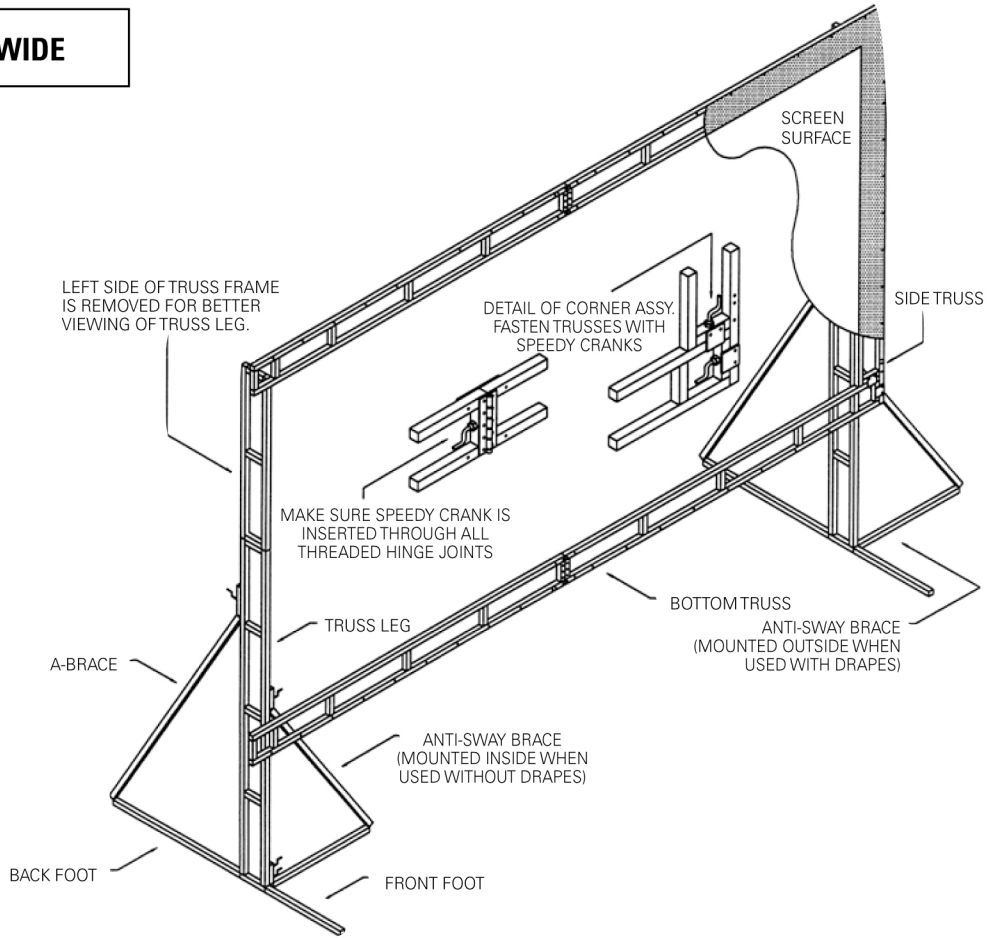
Distributed by

 **ROSE BRAND** NY (800) 223 - 1624 CA (800) 360 - 5056 www.rosebrand.com

INSTRUCTIONS

1. Unfold the 4 sections of truss frame, lock all latches and lay face up on the floor.
2. Attach top and bottom sections to side sections using speedy cranks. Observe color tapes so they match.
3. Unfold truss feet located in top and bottom truss sections to raise frame off the floor.
NOTE 1: Frames have rivnuts at the hinge points on the top and bottom sections. Insert a speedy crank through the unthreaded rivnut and tighten into the threaded rivnut. This will lock hinge joint securely.
NOTE 2: On screens 25' and over, another section of 6" truss is provided. This section will mount on the top of the TOP frame section and will appear to make an inverted "L". "L" section extends toward back of screen. Fasten top "L" section to TOP truss with speedy cranks. Observe color tapes so they match. Flat steel diagonal braces are provided. These are attached between the "L" section and the TOP truss frame section. Tighten all speedy cranks securely.
Attach back braces to the BOTTOM section of the truss frame section with speedy cranks. Observe color tapes so they match. Tighten all speedy cranks securely.
4. Attach truss legs to side frame members at desired height, using speedy cranks. Note color tape on legs and frame. When matched, the screen height will be 44" off the floor. If legs are too high, top section or sections may be folded over. Do not tighten speedy cranks until all are started, then tighten.
5. Lay the frame on the floor.
6. Match top of screen surface (labeled TOP) with top of frame.
7. Snap all four corners.
8. Starting at the bottom section, snap the center button. Continue snapping the remaining buttons.
9. Attach Leg to each side of frame using at least 2 Speedy Cranks per leg. **NOTE: Speedy Crank at bottom of leg should be on side of leg away from screen.** Do not tighten Speedy Cranks until all are started.
10. Height Adjustment. Fast-Fold® Truss screen height is adjustable in 6" increments either up or down. Normal screen height is 44" from bottom of frame to floor and is the standard height for use with presentation drapery accessories.
NOTE: Do not extend frame so that more than half of the frame height is above the top of the legs.
11. Raise front foot of each leg and lock corner brace.
12. With one person at each leg, raise to standing position.
NOTE: With very large screens, more than 2 people may be required.
13. Lower back foot, lock corner brace and attach "A" brace from rear foot to back member of truss leg.
14. Attach anti-sway braces to legs.
15. To pack, reverse procedure. Use caution to prevent surface damage.

UNDER 25' WIDE



25' AND WIDER

