

BASE PLATE - PAINTED
 OR POWDER-COATED
 C.R.S.

WHEELS - NYLON-TIRED
 BALL-BEARING
 EQUIPPED.

1/4" MAXIMUM CABLE
 SIZE.

NOT DESIGNED TO LIFT
 RIGGING LOADS.

MUST BE SECURELY
 ATTACHED TO
 OVERHEAD STRUCTURE
 WITH PROPERLY RATED
 HARDWARE.

adc AUTOMATIC DEVICES COMPANY
 2121 S. 12TH ST. ALLENTOWN, PA 18103

THIS DRAWING HAS BEEN PREPARED AS A SERVICE TO OUR CUSTOMER AND IS INTENDED ONLY TO BE SUGGESTIVE IN NATURE AND IS NOT TO BE USED AS AN ACTUAL INSTALLATION DRAWING. PREVAILING JOB CONDITIONS AND ACCEPTED PRACTICES MUST BE TAKEN INTO ACCOUNT WHEN THE EQUIPMENT IS INSTALLED.

SIZE	DATE	SERIES
A	02/07/13	CONTOUR PULLEYS CURVED LIFT CURTAINS

DRAWN BY	APPROVED BY	DESCRIPTION
DJL		CP-1S

SCALE	SHEET	DWG NO.
1/2=1	1 OF 1	A-CP1S-13

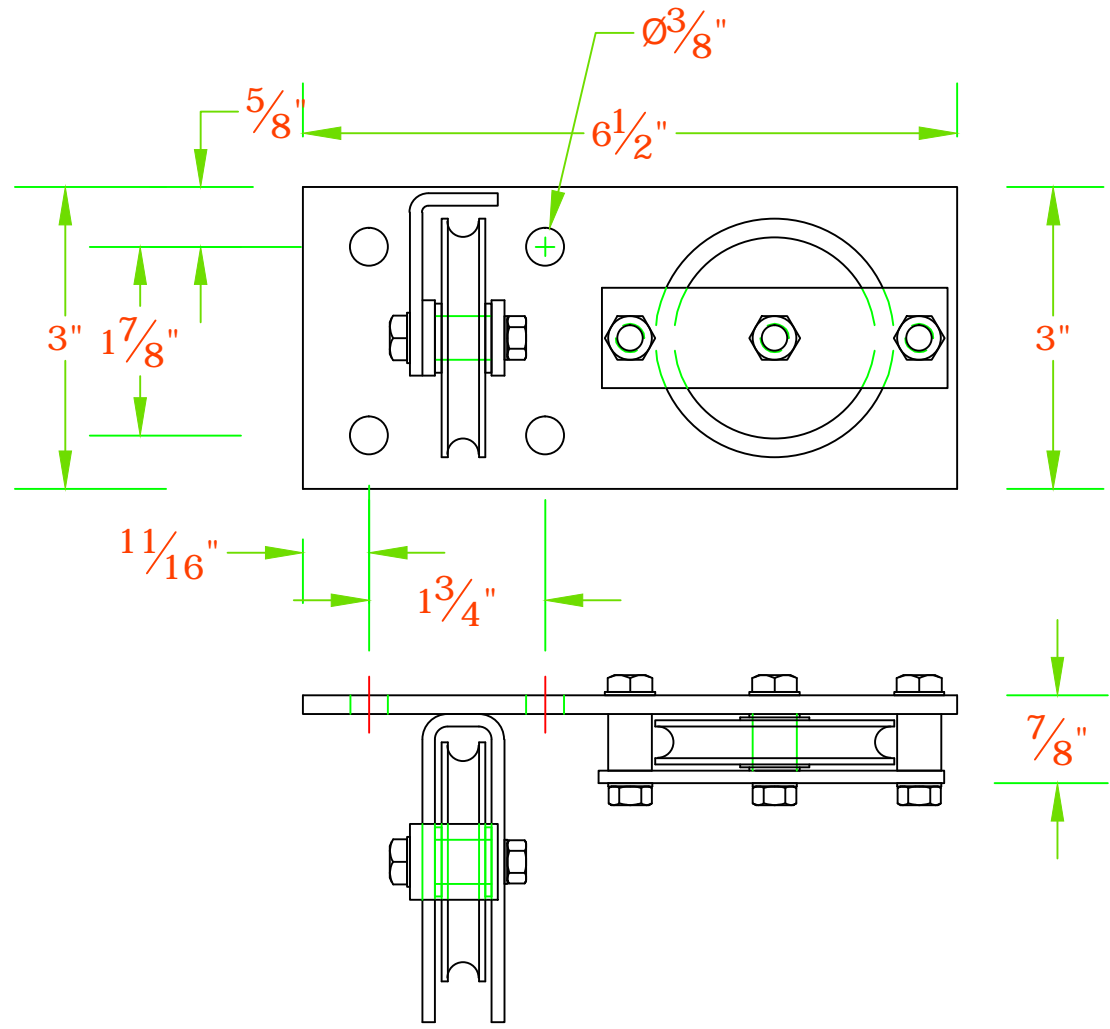
BASE PLATE - PAINTED
 OR POWDER-COATED
 C.R.S.

WHEELS - NYLON-TIRED
 BALL-BEARING
 EQUIPPED.

$\frac{1}{4}$ " MAXIMUM CABLE
 SIZE.

NOT DESIGNED TO LIFT
 RIGGING LOADS.

MUST BE SECURELY
 ATTACHED TO
 OVERHEAD STRUCTURE
 WITH PROPERLY RATED
 HARDWARE.



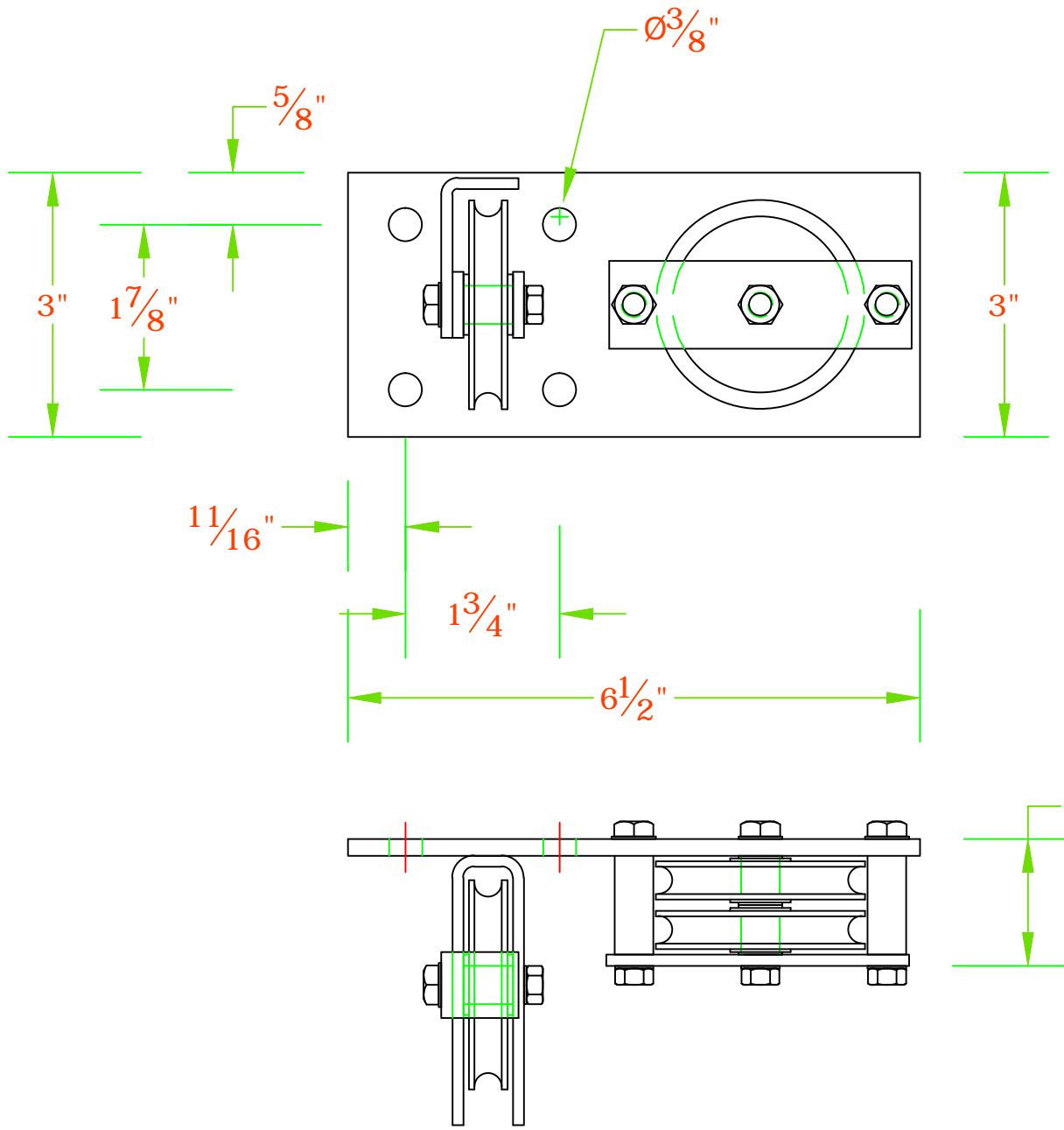
adc AUTOMATIC DEVICES COMPANY
 2121 S. 12TH ST. ALLENTOWN, PA 18103

THIS DRAWING HAS BEEN PREPARED AS A SERVICE TO OUR CUSTOMER AND IS INTENDED ONLY TO BE SUGGESTIVE IN NATURE AND IS NOT TO BE USED AS AN ACTUAL INSTALLATION DRAWING. PREVAILING JOB CONDITIONS AND ACCEPTED PRACTICES MUST BE TAKEN INTO ACCOUNT WHEN THE EQUIPMENT IS INSTALLED.

SIZE	DATE	SERIES
A	11/03/11	CONTOUR PULLEYS CURVED LIFT CURTAINS

DRAWN BY	APPROVED BY	DESCRIPTION
DJL		CP-2S

SCALE	SHEET	DWG NO.
1/2=1	1 OF 1	A-CP2S-11



**BASE PLATE - PAINTED
 OR POWDER-COATED
 C.R.S.**

**WHEELS - NYLON-TIRED
 BALL-BEARING
 EQUIPPED.**

**1/4" MAXIMUM CABLE
 SIZE.**

**NOT DESIGNED TO LIFT
 RIGGING LOADS.**

**MUST BE SECURELY
 ATTACHED TO
 OVERHEAD STRUCTURE
 WITH PROPERLY RATED
 HARDWARE.**

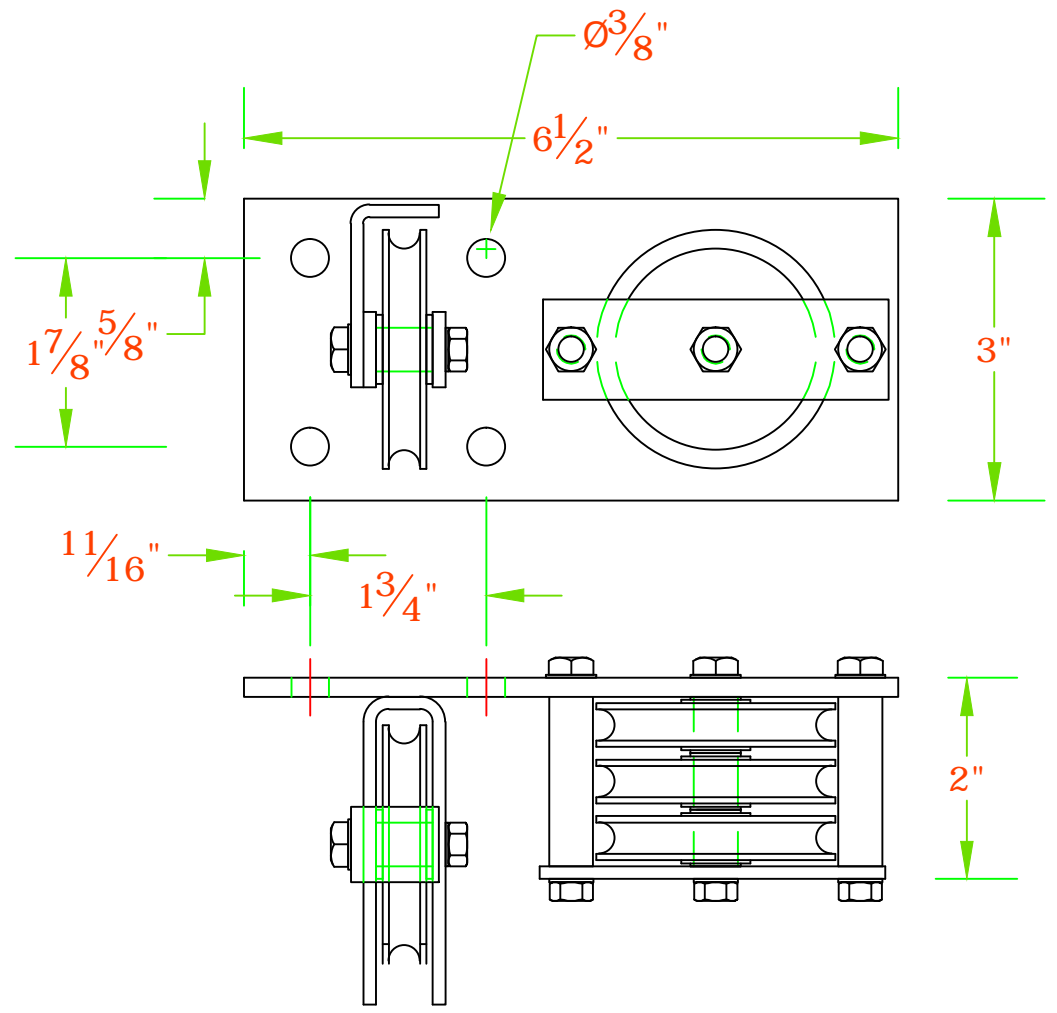
adc AUTOMATIC DEVICES COMPANY
 2121 S. 12TH ST. ALLENTOWN, PA 18103

THIS DRAWING HAS BEEN PREPARED AS A SERVICE TO OUR CUSTOMER AND IS INTENDED ONLY TO BE SUGGESTIVE IN NATURE AND IS NOT TO BE USED AS AN ACTUAL INSTALLATION DRAWING. PREVAILING JOB CONDITIONS AND ACCEPTED PRACTICES MUST BE TAKEN INTO ACCOUNT WHEN THE EQUIPMENT IS INSTALLED.

SIZE A	DATE 11/03/11	SERIES CONTOUR PULLEYS CURVED LIFT CURTAINS
------------------	-------------------------	---

DRAWN BY DJL	APPROVED BY	DESCRIPTION CP-3S
------------------------	-------------	-----------------------------

SCALE 1/2=1	SHEET 1 OF 1	DWG NO. A-CP3S-11
-----------------------	------------------------	-----------------------------



BASE PLATE - PAINTED
 OR POWDER-COATED
 C.R.S.

WHEELS - NYLON-TIRED
 BALL-BEARING
 EQUIPPED.

1/4" MAXIMUM CABLE
 SIZE.

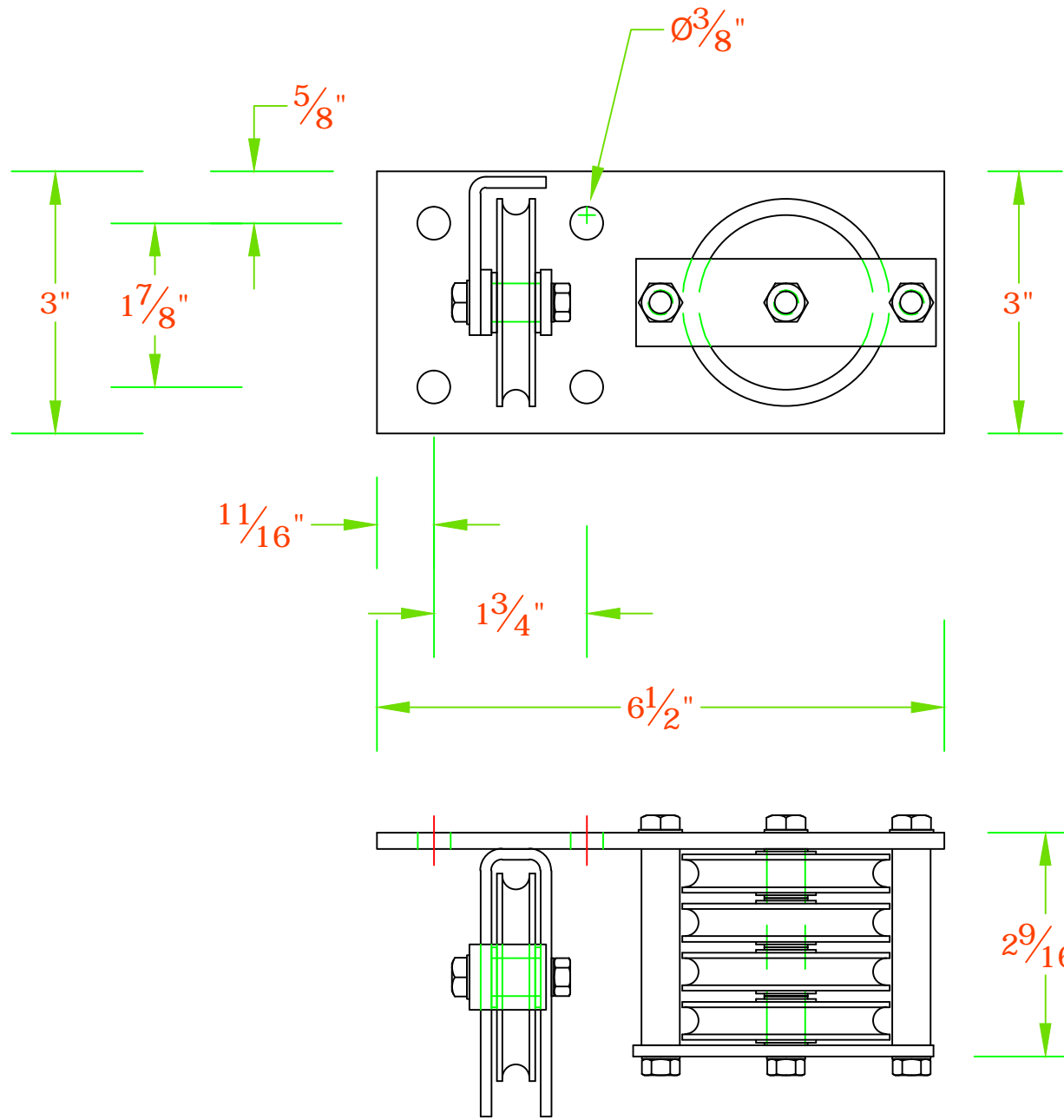
NOT DESIGNED TO LIFT
 RIGGING LOADS.

MUST BE SECURELY
 ATTACHED TO
 OVERHEAD STRUCTURE
 WITH PROPERLY RATED
 HARDWARE.

adc AUTOMATIC DEVICES COMPANY
 2121 S. 12TH ST. ALLENTOWN, PA 18103

THIS DRAWING HAS BEEN PREPARED AS A SERVICE TO OUR CUSTOMER AND IS INTENDED ONLY TO BE SUGGESTIVE IN NATURE AND IS NOT TO BE USED AS AN ACTUAL INSTALLATION DRAWING. PREVAILING JOB CONDITIONS AND ACCEPTED PRACTICES MUST BE TAKEN INTO ACCOUNT WHEN THE EQUIPMENT IS INSTALLED.

SIZE A	DATE 11/03/11	SERIES CONTOUR PULLEYS CURVED LIFT CURTAINS
DRAWN BY DJL	APPROVED BY	DESCRIPTION CP-4S



BASE PLATE - PAINTED OR POWDER-COATED C.R.S.

WHEELS - NYLON-TIRED BALL-BEARING EQUIPPED.

1/4" MAXIMUM CABLE SIZE.

NOT DESIGNED TO LIFT RIGGING LOADS.

MUST BE SECURELY ATTACHED TO OVERHEAD STRUCTURE WITH PROPERLY RATED HARDWARE.

adc AUTOMATIC DEVICES COMPANY
 2121 S. 12TH ST. ALLENTOWN, PA 18103

THIS DRAWING HAS BEEN PREPARED AS A SERVICE TO OUR CUSTOMER AND IS INTENDED ONLY TO BE SUGGESTIVE IN NATURE AND IS NOT TO BE USED AS AN ACTUAL INSTALLATION DRAWING. PREVAILING JOB CONDITIONS AND ACCEPTED PRACTICES MUST BE TAKEN INTO ACCOUNT WHEN THE EQUIPMENT IS INSTALLED.

SIZE A	DATE 11/03/11	SERIES CONTOUR PULLEYS CURVED LIFT CURTAINS
DRAWN BY DJL	APPROVED BY	DESCRIPTION CP-5S
SCALE 1/2=1	SHEET 1 OF 1	DWG NO. A-CP5S-11

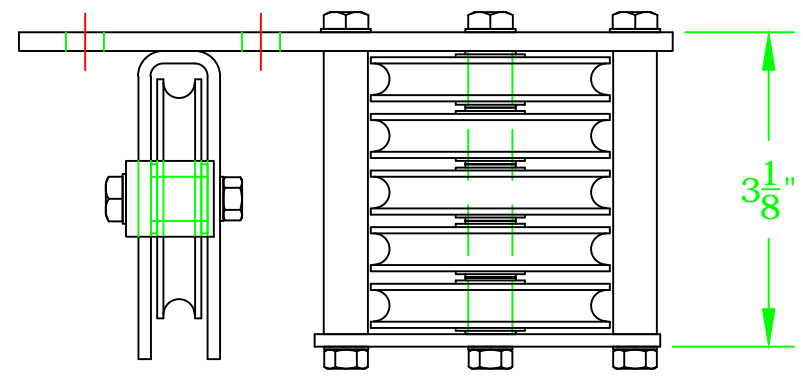
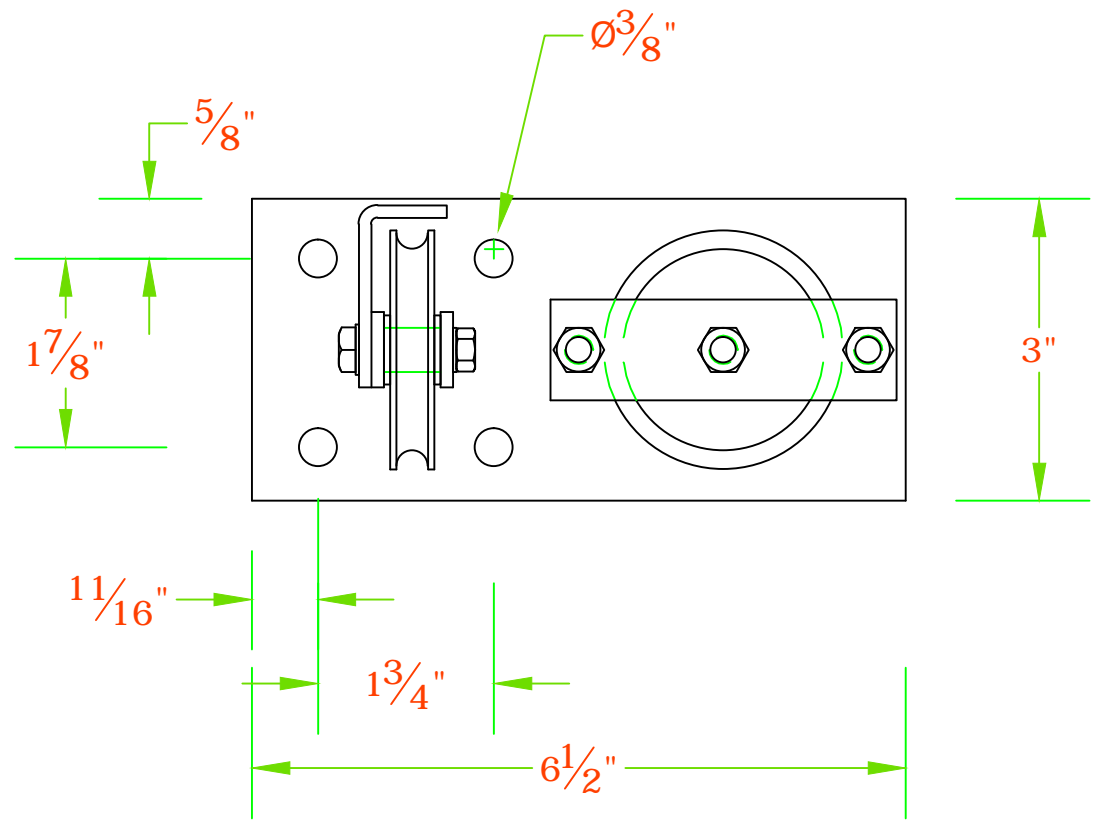
BASE PLATE - PAINTED
 OR POWDER-COATED
 C.R.S.

WHEELS - NYLON-TIRED
 BALL-BEARING
 EQUIPPED.

$\frac{1}{4}$ " MAXIMUM CABLE
 SIZE.

NOT DESIGNED TO LIFT
 RIGGING LOADS.

MUST BE SECURELY
 ATTACHED TO
 OVERHEAD STRUCTURE
 WITH PROPERLY RATED
 HARDWARE.



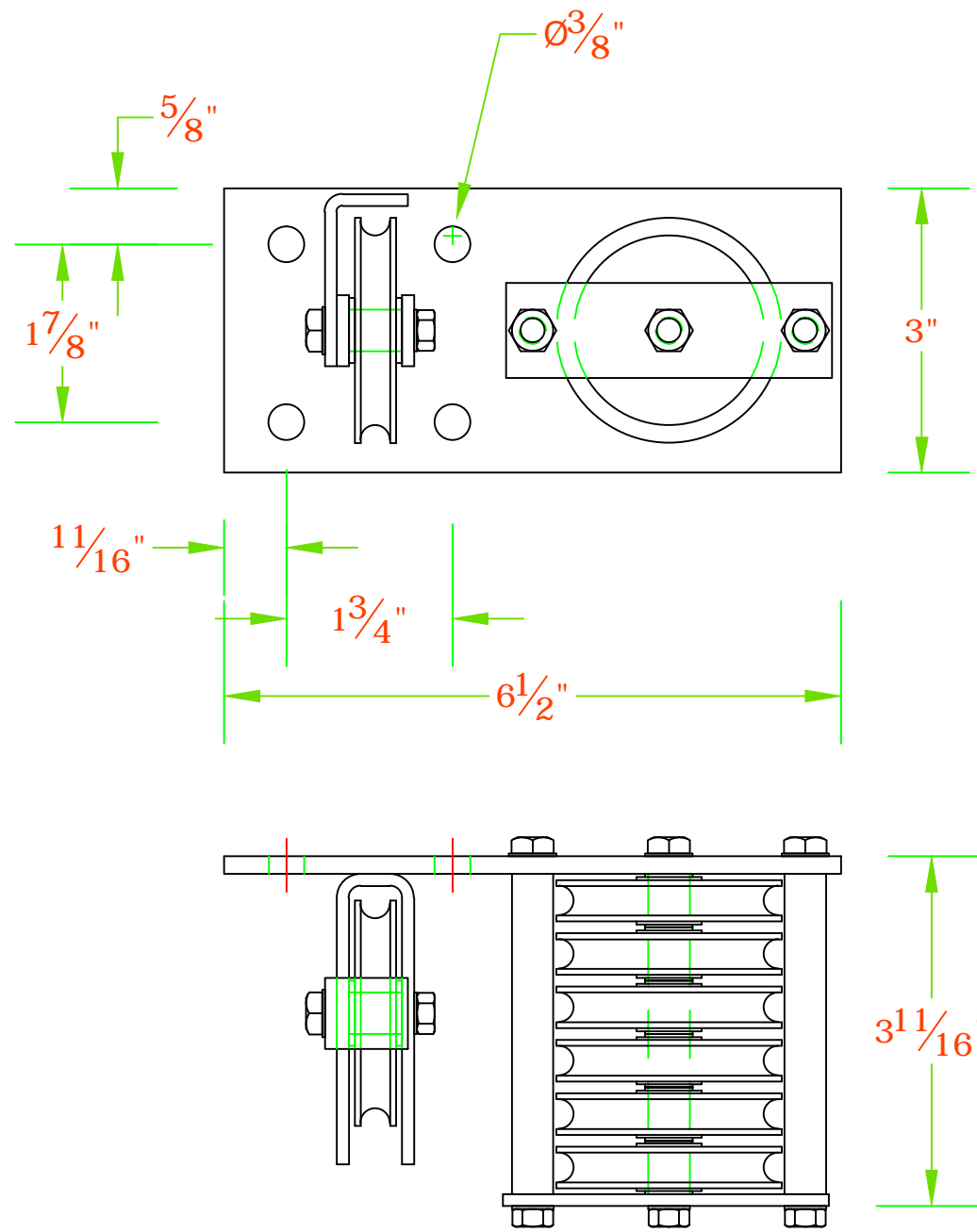
adc AUTOMATIC DEVICES COMPANY
 2121 S. 12TH ST. ALLENTOWN, PA 18103

THIS DRAWING HAS BEEN PREPARED AS A SERVICE TO OUR CUSTOMER AND IS INTENDED ONLY TO BE SUGGESTIVE IN NATURE AND IS NOT TO BE USED AS AN ACTUAL INSTALLATION DRAWING. PREVAILING JOB CONDITIONS AND ACCEPTED PRACTICES MUST BE TAKEN INTO ACCOUNT WHEN THE EQUIPMENT IS INSTALLED.

SIZE	DATE	SERIES
A	11/03/11	CONTOUR PULLEYS CURVED LIFT CURTAINS

DRAWN BY	APPROVED BY	DESCRIPTION
DJL		CP-6S

SCALE	SHEET	DWG NO.
1/2=1	1 OF 1	A-CP6S-11



BASE PLATE - PAINTED
 OR POWDER-COATED
 C.R.S.

WHEELS - NYLON-TIRED
 BALL-BEARING
 EQUIPPED.

1/4" MAXIMUM CABLE
 SIZE.

NOT DESIGNED TO LIFT
 RIGGING LOADS.

MUST BE SECURELY
 ATTACHED TO
 OVERHEAD STRUCTURE
 WITH PROPERLY RATED
 HARDWARE.

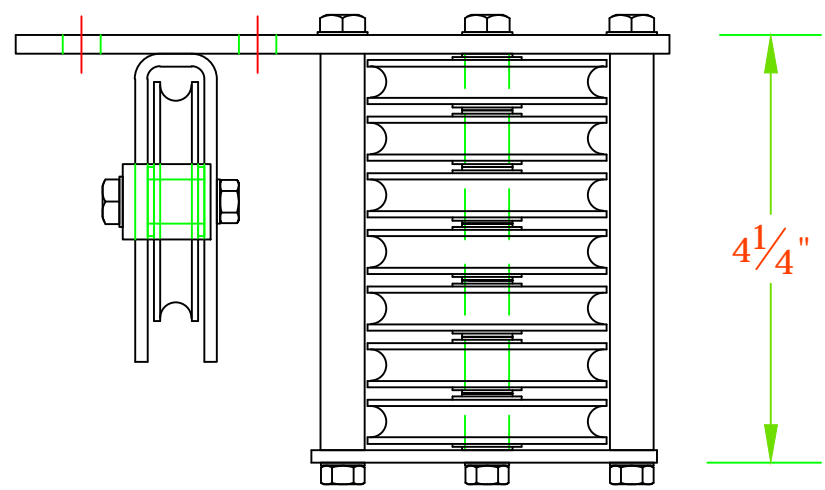
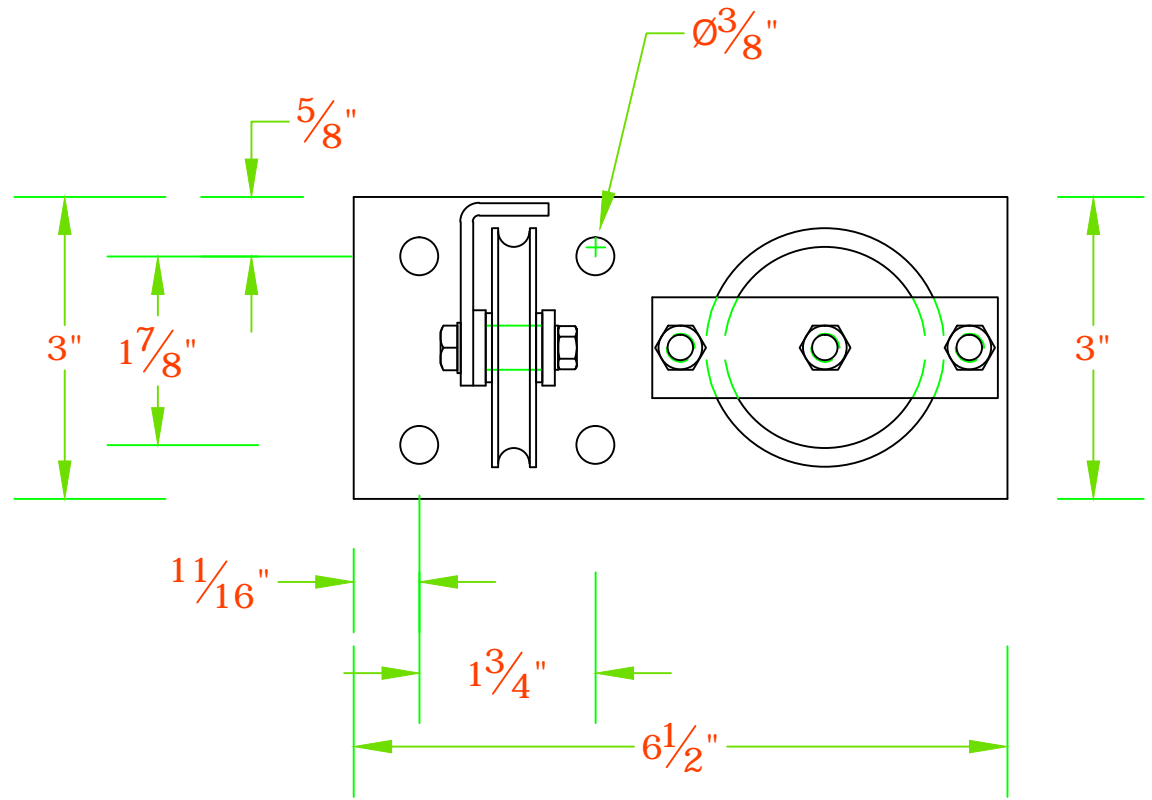
ado AUTOMATIC DEVICES COMPANY
 2121 S. 12TH ST. ALLENTOWN, PA 18103

THIS DRAWING HAS BEEN PREPARED AS A SERVICE TO OUR CUSTOMER AND IS INTENDED ONLY TO BE SUGGESTIVE IN NATURE AND IS NOT TO BE USED AS AN ACTUAL INSTALLATION DRAWING. PREVAILING JOB CONDITIONS AND ACCEPTED PRACTICES MUST BE TAKEN INTO ACCOUNT WHEN THE EQUIPMENT IS INSTALLED.

SIZE	DATE	SERIES
A	11/03/11	CONTOUR PULLEYS CURVED LIFT CURTAINS

DRAWN BY	APPROVED BY	DESCRIPTION
DJL		CP-7S

SCALE	SHEET	DWG NO.
1/2=1	1 OF 1	A-CP7S-11



BASE PLATE - PAINTED OR POWDER-COATED C.R.S.

WHEELS - NYLON-TIRED BALL-BEARING EQUIPPED.

1/4" MAXIMUM CABLE SIZE.

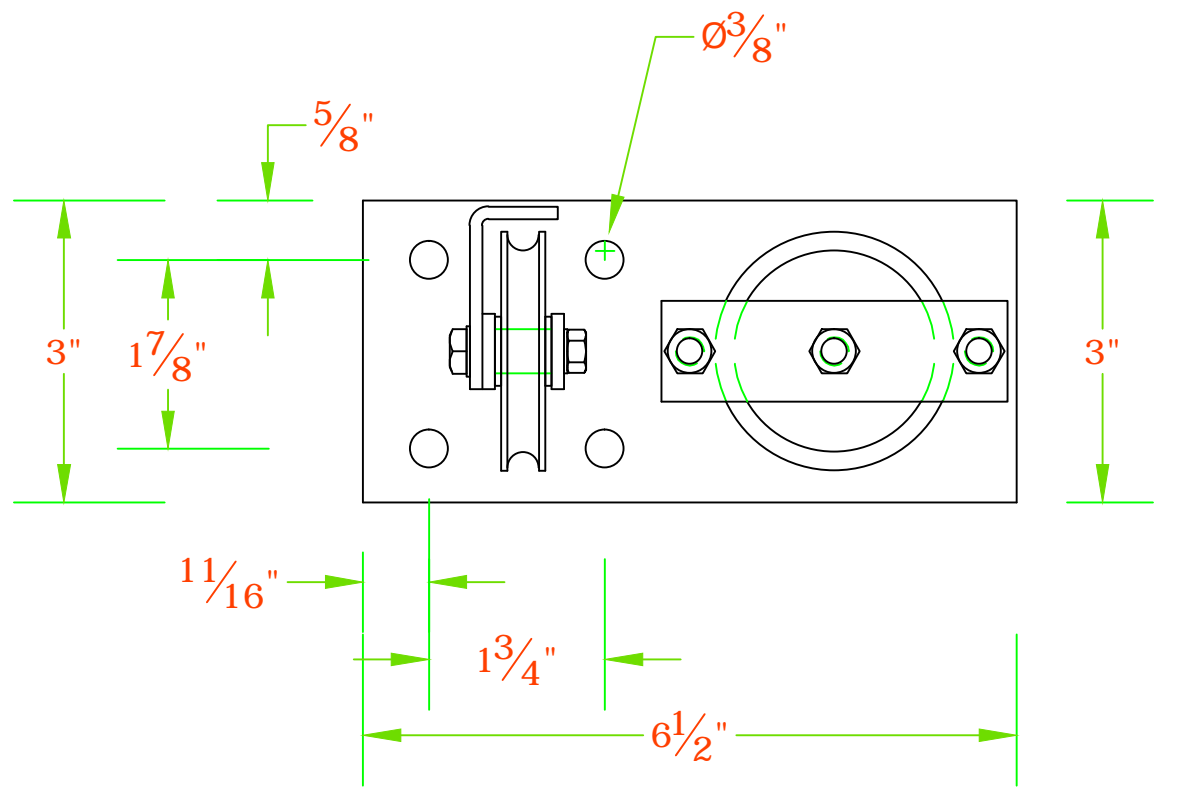
NOT DESIGNED TO LIFT RIGGING LOADS.

MUST BE SECURELY ATTACHED TO OVERHEAD STRUCTURE WITH PROPERLY RATED HARDWARE.

ado AUTOMATIC DEVICES COMPANY
 2121 S. 12TH ST. ALLENTOWN, PA 18103

THIS DRAWING HAS BEEN PREPARED AS A SERVICE TO OUR CUSTOMER AND IS INTENDED ONLY TO BE SUGGESTIVE IN NATURE AND IS NOT TO BE USED AS AN ACTUAL INSTALLATION DRAWING. PREVAILING JOB CONDITIONS AND ACCEPTED PRACTICES MUST BE TAKEN INTO ACCOUNT WHEN THE EQUIPMENT IS INSTALLED.

SIZE	DATE	SERIES	CONTOUR PULLEYS CURVED LIFT CURTAINS
A	11/03/11		
DRAWN BY	APPROVED BY	DESCRIPTION	
DJL		CP-8S	



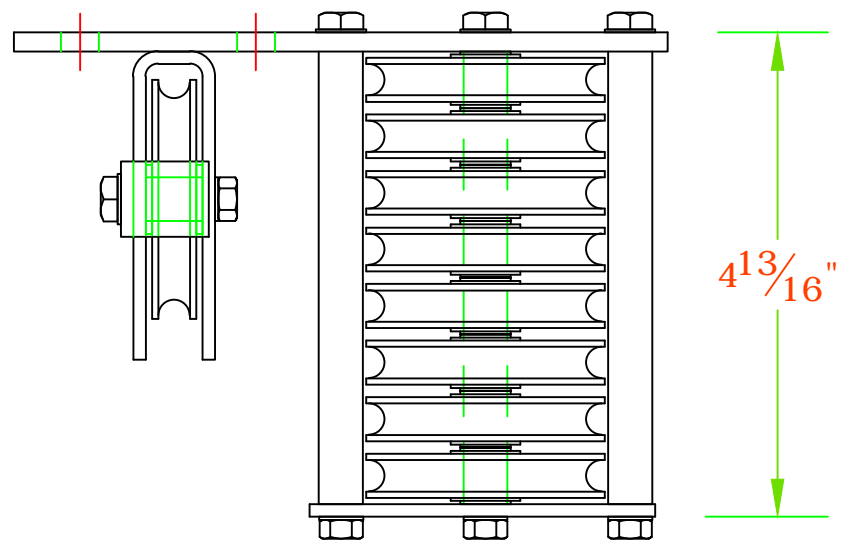
BASE PLATE - PAINTED
 OR POWDER-COATED
 C.R.S.

WHEELS - NYLON-TIRED
 BALL-BEARING
 EQUIPPED.

1/4" MAXIMUM CABLE
 SIZE.

NOT DESIGNED TO LIFT
 RIGGING LOADS.

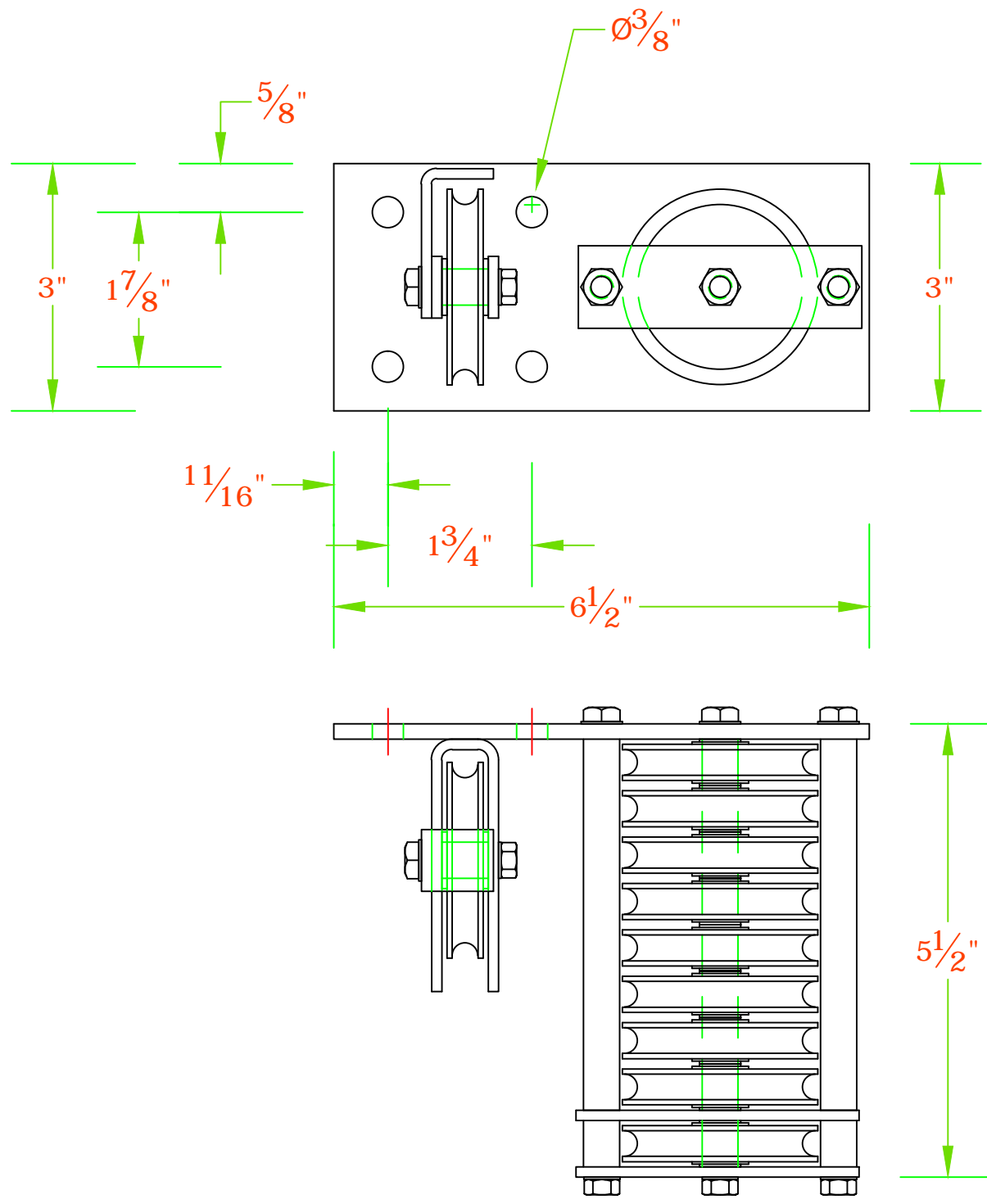
MUST BE SECURELY
 ATTACHED TO
 OVERHEAD STRUCTURE
 WITH PROPERLY RATED
 HARDWARE.



adc AUTOMATIC DEVICES COMPANY
 2121 S. 12TH ST. ALLENTOWN, PA 18103

THIS DRAWING HAS BEEN PREPARED AS A SERVICE TO OUR CUSTOMER AND IS INTENDED ONLY TO BE SUGGESTIVE IN NATURE AND IS NOT TO BE USED AS AN ACTUAL INSTALLATION DRAWING. PREVAILING JOB CONDITIONS AND ACCEPTED PRACTICES MUST BE TAKEN INTO ACCOUNT WHEN THE EQUIPMENT IS INSTALLED.

SIZE A	DATE 11/03/11	SERIES CONTOUR PULLEYS CURVED LIFT CURTAINS
DRAWN BY DJL	APPROVED BY	DESCRIPTION CP-9S




BASE PLATE - PAINTED OR POWDER-COATED C.R.S.

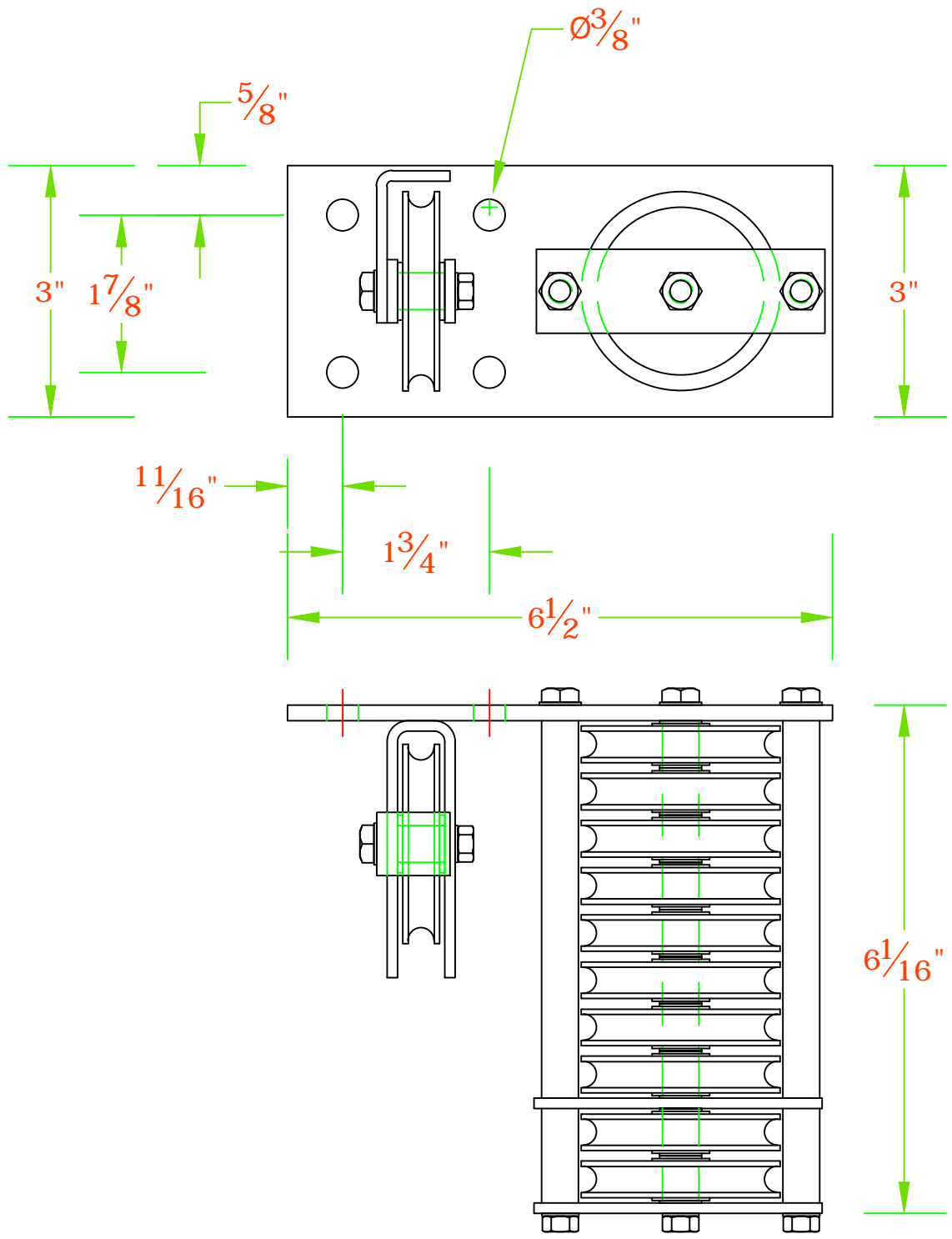
WHEELS - NYLON-TIRED BALL-BEARING EQUIPPED.

$\frac{1}{4}"$ MAXIMUM CABLE SIZE.

NOT DESIGNED TO LIFT RIGGING LOADS.

MUST BE SECURELY ATTACHED TO OVERHEAD STRUCTURE WITH PROPERLY RATED HARDWARE.

		AUTOMATIC DEVICES COMPANY	
		2121 S. 12TH ST. ALLENTOWN, PA 18103	
THIS DRAWING HAS BEEN PREPARED AS A SERVICE TO OUR CUSTOMER AND IS INTENDED ONLY TO BE SUGGESTIVE IN NATURE AND IS NOT TO BE USED AS AN ACTUAL INSTALLATION DRAWING. PREVAILING JOB CONDITIONS AND ACCEPTED PRACTICES MUST BE TAKEN INTO ACCOUNT WHEN THE EQUIPMENT IS INSTALLED.			
SIZE	DATE	SERIES	CONTOUR PULLEYS CURVED LIFT CURTAINS
A	11/03/11		
DRAWN BY	APPROVED BY	DESCRIPTION	
DJL		CP-10S	
SCALE	SHEET	DWG NO.	
1/2=1	1 OF 1	A-CP10S-11	



**BASE PLATE - PAINTED
 OR POWDER-COATED
 C.R.S.**

**WHEELS - NYLON-TIRED
 BALL-BEARING
 EQUIPPED.**

**1/4" MAXIMUM CABLE
 SIZE.**

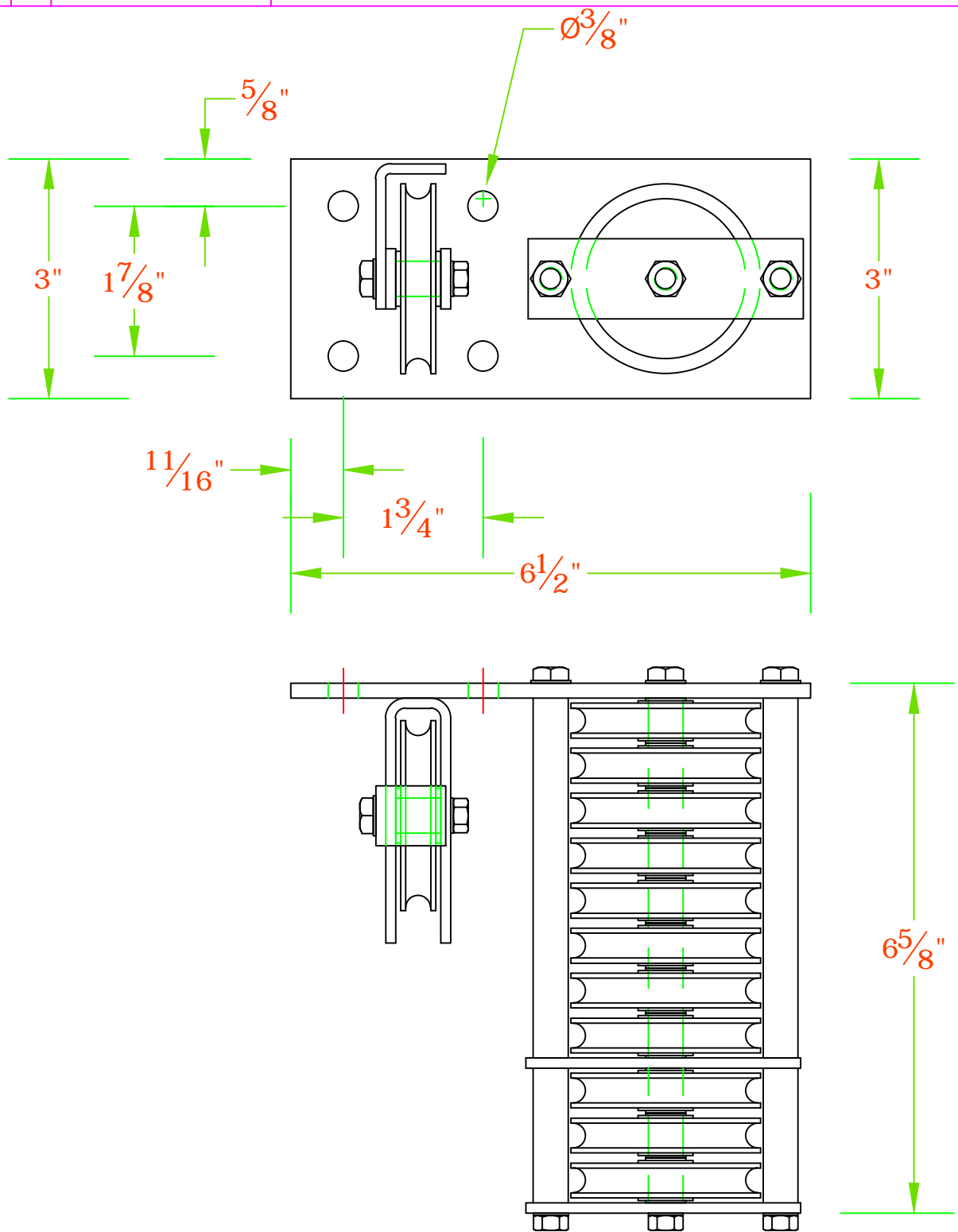
**NOT DESIGNED TO LIFT
 RIGGING LOADS.**

**MUST BE SECURELY
 ATTACHED TO
 OVERHEAD STRUCTURE
 WITH PROPERLY RATED
 HARDWARE.**

ado AUTOMATIC DEVICES COMPANY
 2121 S. 12TH ST. ALLENTOWN, PA 18103

THIS DRAWING HAS BEEN PREPARED AS A SERVICE TO OUR CUSTOMER AND IS INTENDED ONLY TO BE SUGGESTIVE IN NATURE AND IS NOT TO BE USED AS AN ACTUAL INSTALLATION DRAWING. PREVAILING JOB CONDITIONS AND ACCEPTED PRACTICES MUST BE TAKEN INTO ACCOUNT WHEN THE EQUIPMENT IS INSTALLED.

SIZE A	DATE 11/03/11	SERIES CONTOUR PULLEYS CURVED LIFT CURTAINS
DRAWN BY DJL	APPROVED BY	DESCRIPTION CP-11S




BASE PLATE - PAINTED
 OR POWDER-COATED
 C.R.S.

WHEELS - NYLON-TIRED
 BALL-BEARING
 EQUIPPED.

$1/4"$ MAXIMUM CABLE
 SIZE.

NOT DESIGNED TO LIFT
 RIGGING LOADS.

MUST BE SECURELY
 ATTACHED TO
 OVERHEAD STRUCTURE
 WITH PROPERLY RATED
 HARDWARE.

		AUTOMATIC DEVICES COMPANY 2121 S. 12TH ST. ALLENTOWN, PA 18103	
		THIS DRAWING HAS BEEN PREPARED AS A SERVICE TO OUR CUSTOMER AND IS INTENDED ONLY TO BE SUGGESTIVE IN NATURE AND IS NOT TO BE USED AS AN ACTUAL INSTALLATION DRAWING. PREVAILING JOB CONDITIONS AND ACCEPTED PRACTICES MUST BE TAKEN INTO ACCOUNT WHEN THE EQUIPMENT IS INSTALLED.	
SIZE	DATE	SERIES	DESCRIPTION
A	11/03/11	CONTOUR PULLEYS CURVED LIFT CURTAINS	CP-12S
DRAWN BY	APPROVED BY	DESCRIPTION	
DJL		CP-12S	
SCALE	SHEET	DWG NO.	
1/2=1	1 OF 1	A-CP12S-11	