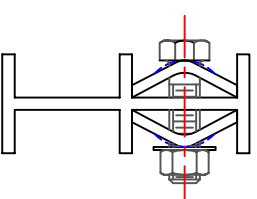
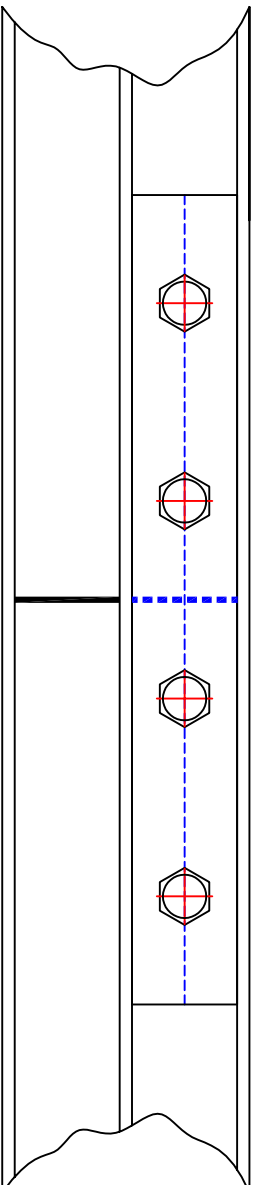


HARDWARE LIST:

- Z-318 (4) – 5/16" X 1 1/4" BOLT
- Z-207 (4) – 5/16" NUT
- Z-510 (4) – 5/16" LOCKWASHER



INSTRUCTIONS FOR PROPER SPLICING:

BUTT TRACK SECTIONS AGAINST EACH OTHER TIGHTLY.
 CENTER ONE HALF OF THE SPLICE CLAMP OVER THE JOINT.
 MARK LOCATION OF HOLES.
 DRILL (4) 3/8" DIAMETER HOLES.
 COMPLETE SPLICE WITH (4) 5/16" DIAMETER HEX HEAD BOLTS
 AND HEX NUTS.
 TIGHTEN SECURELY.

<p>AUTOMATIC DEVICES COMPANY 2121 S. 12TH ST. ALLENTOWN, PA 18103</p>			
<p>THIS DRAWING HAS BEEN PREPARED AS A SERVICE TO OUR CUSTOMER AND IS INTENDED ONLY TO BE SUGGESTIVE IN NATURE AND IS NOT TO BE USED AS AN ACTUAL INSTALLATION DRAWING. PREVAILING JOB CONDITIONS AND ACCEPTED PRACTICES MUST BE TAKEN INTO ACCOUNT WHEN THE EQUIPMENT IS INSTALLED.</p>			
SIZE	DATE	FORM	REV
A	06/07/93	411	
DRAWN BY	APPROVED BY	DESCRIPTION	
GAR		4224 SPLICING CLAMP	
SCALE 1/2"=1"	SHEET 1 OF 1	DWG NO. A-4224-93	