

# The V-box Three Step Set-up

## 1 Connect -2 Upload -3 Play



### 1. Connect the cables.

On the Rear: Connect the power plug

On the Front: Connect to the control network with the Ethernet plug. Connect a video source to one of your choice ( CVBS, S-Video or VGA<sup>1</sup> ). Keep the cables that connect the video source as short as possible. Use high quality cables.

### 2. Make and upload your configuration.

Create the configuration file of your installed patchwork with the ShowLED Designer or the ShowLEDitor application. Power up the V-box. Upload the configuration with a TFTP client application. ( more information on the next page(s) ) Disconnect the PC when you're done.

### 3. Select video source and start playing.

Use the 'Select' button to select the Video input source that you want to work with. Note: The LED on the right of the select input will start flashing when a valid video signal is applied. Now you are ready to play with it.

<sup>1</sup> Resolution 800x600 – refresh 60Hz

## How to upload the configuration file to the V-box?

### Prerequisite

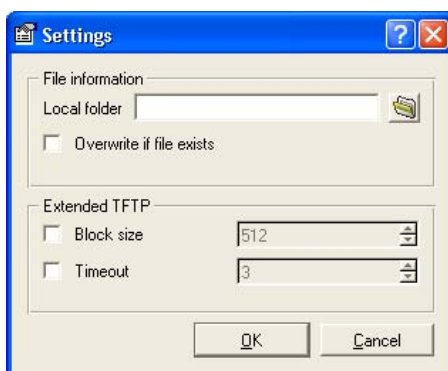
- 1 Obtain a free copy of "TFTP client" from <http://www.brothersoft.com/tftp-client-122473.html>
- 2 Install the program

### Usage

- 1 Start the program "TFTP client"
- 2 Fill in the IP address of the V-box, this should be 10.128.0.1
- 3 Choose for operation "upload"
- 4 The format is set to binary
- 5 Locate your configuration file (name.slc)
- 6 Click on "Upload now"



Note: Do not alter the default settings (as shown below)

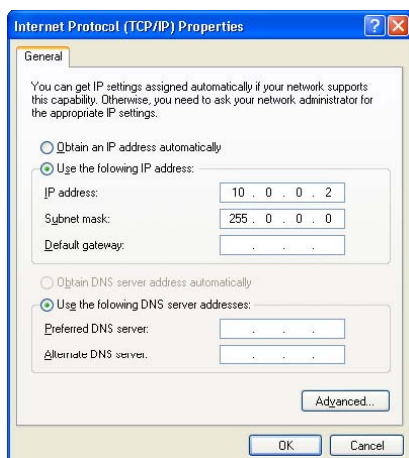


OR... You can always use the build-in TFTP client from Microsoft. (Accessible from the command line) command line: `tftp -i 10.128.0.1 put C:\YOURDIRECTORY\yourpatchworkname.slc`

## Troubleshooting V-box upload problem

### Checklist

1. Make sure that the local area connection on the PC has a static IP address and is part of Class-A network (for example IP 10.0.0.2 / Subnet 255.0.0.0).



If your O.S. support both IP4 and IP6 make sure that you change this for IP4.

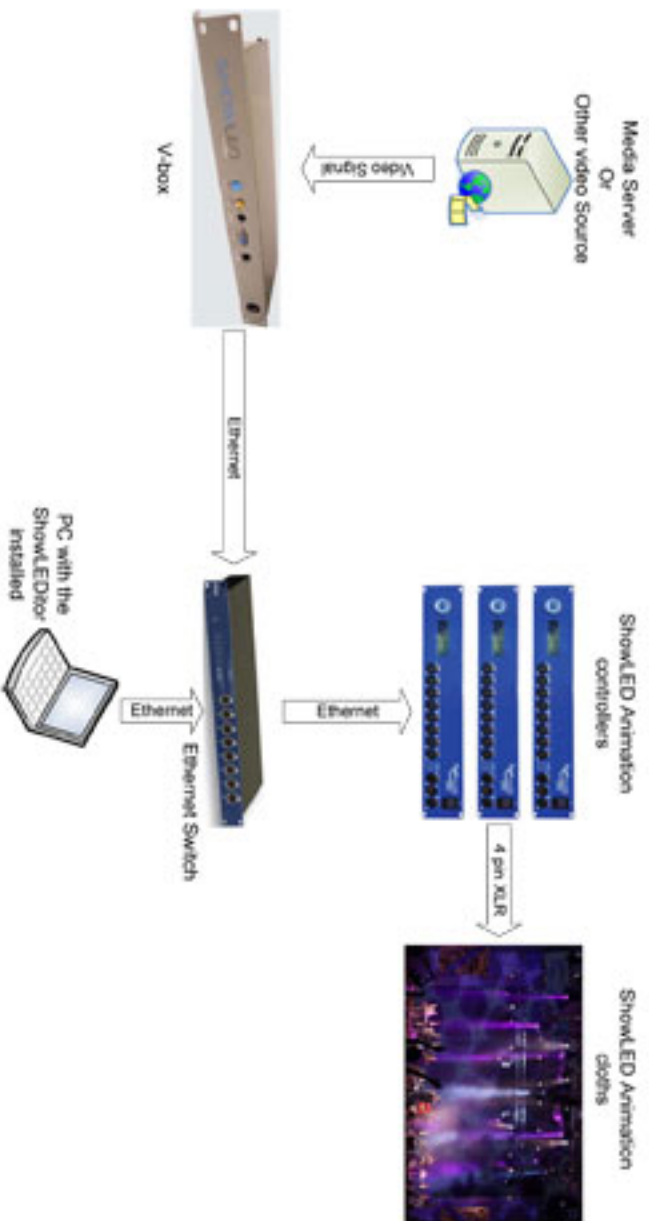
1. Disable the Windows firewall or any other third party firewall.
2. Disable your wireless connection.
3. Check your connection by pinging the V-box (command line: ping 10.128.0.1 )
4. Upload your file

### Notes:

Try to use a PC that runs Windows in native mode, because some virtualisation software packages limit the access to the LAN controller.

If you want to use the build-in TFTP client from Microsoft, you need to install it in some cases (for instance in Vista Home edition)

## V-box Connection overview



**ROSE BRAND**

NY (800) 223 - 1624

CA (800) 360 - 5056

[www.rosebrand.com](http://www.rosebrand.com)