

# SHOWLED

Animation Manual  
Version-3.0

3 Play

2 Upload

1 Connect



# 1 Connect



|                                |    |
|--------------------------------|----|
| Connection for Configuration   | 06 |
| Connection for Upload to V-box | 07 |
| Connection for Playback        | 08 |

# 2 Upload



|  |    |
|--|----|
| Configuring PC                             | 09 |
| Preparing File for Upload - ShowLED Editor | 10 |

# 3 play



|                            |    |
|----------------------------|----|
| Uploading to ShowLED V-box | 17 |
| Playing Animation          | 17 |

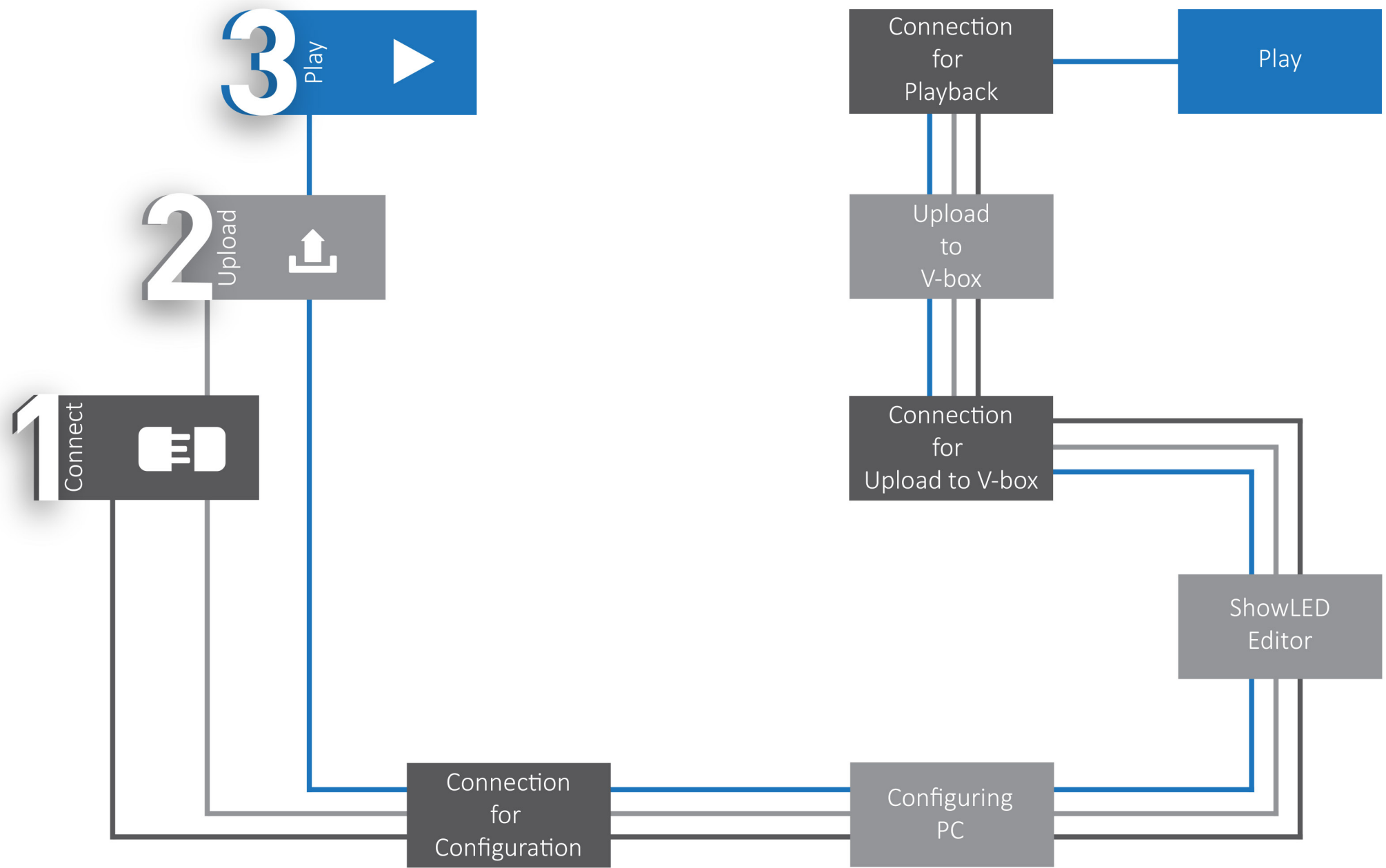


ShowLED  
Animation Controller 18

|                 |    |
|-----------------|----|
| ShowLED Filter  | 20 |
| LED Repair      | 22 |
| Plug Repair     | 24 |
| Plug Redundancy | 26 |
| LED Test        | 27 |



## TROUBLESHOOTING



*Note : Configuring and upload are not required for each show if the curtains remain in same position and orientation.*



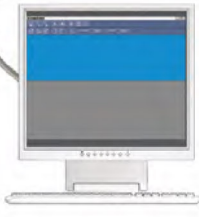
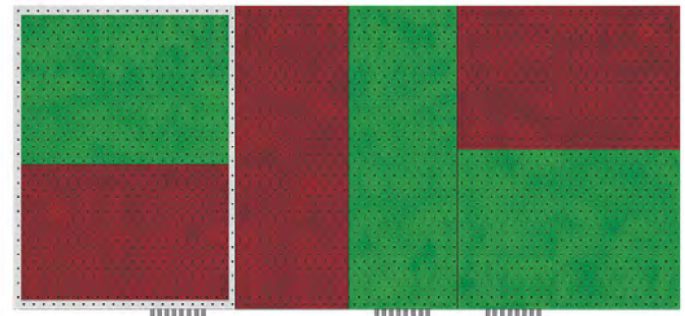
# CONNECTION FOR CONFIGURATION

Panels

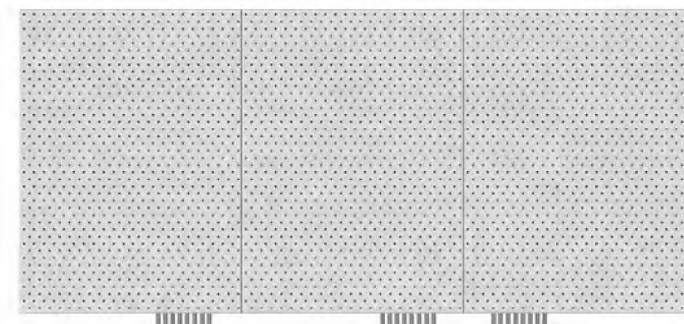
SL Animation Controllers

Ethernet Switch

Configured PC with Showled Editor



# CONNECTION FOR UPLOAD



Showled V-box

Configured PC with TFTP Client







## CONNECTION FOR PLAYBACK

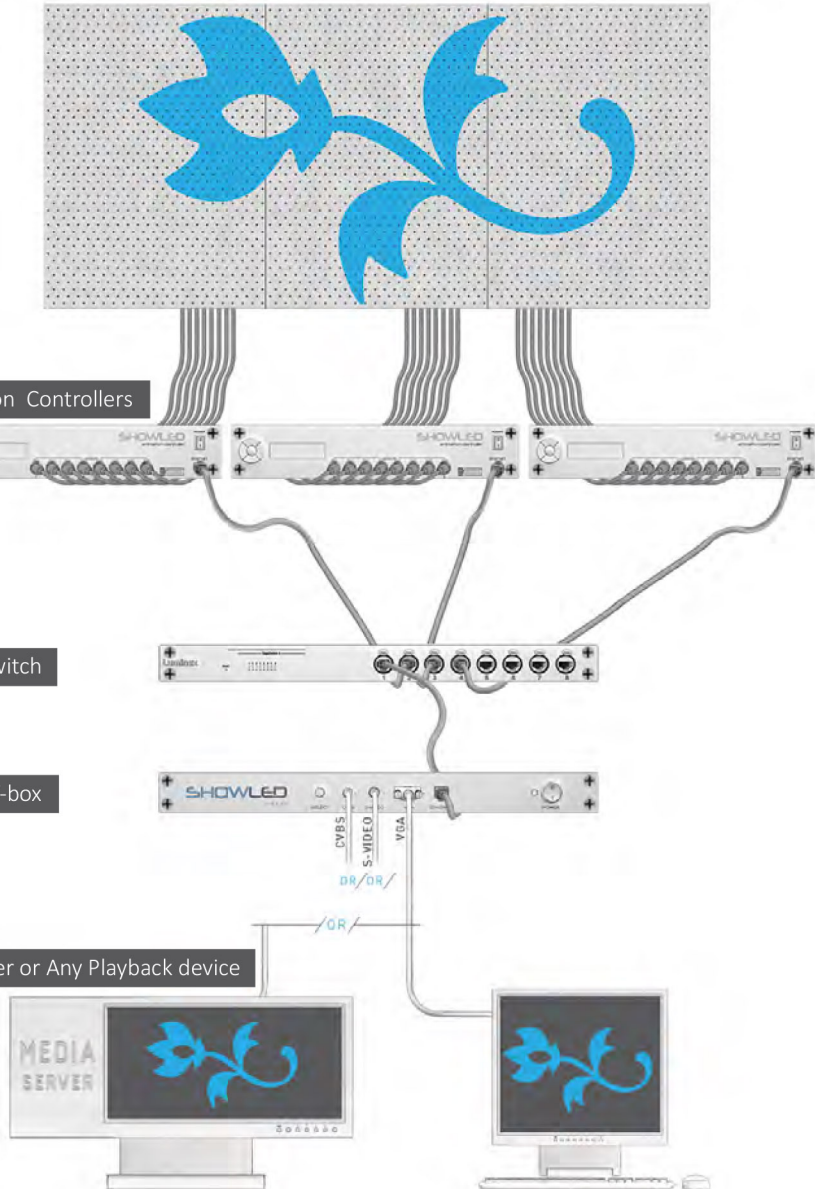
Panels

SL Animation Controllers

Ethernet Switch

ShowLED V-box

Media Server or Any Playback device



## CONFIGURING PC

Upload



Disable Antivirus

Disable Firewall

Disable Wireless Connections


☐ Obtain an IP address automatically

☒ Use the following IP address:

IP address:

10 . 0 . 0 . 2

Subnet mask:

255 . 0 . 0 . 0

Default gateway:

. . .

☐ Obtain DNS server address automatically

☒ Use the following DNS server address:

Preferred DNS server:

. . .

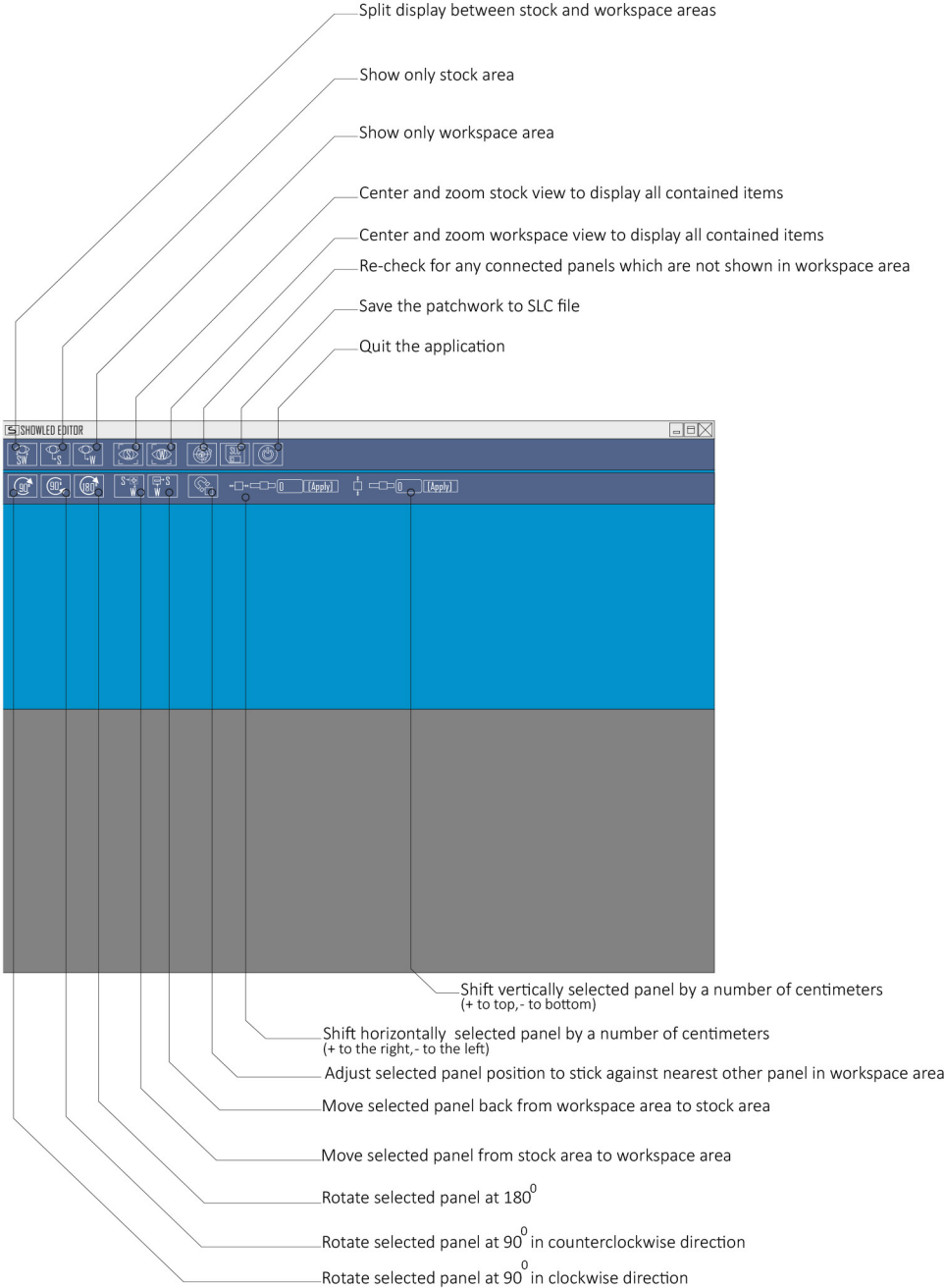
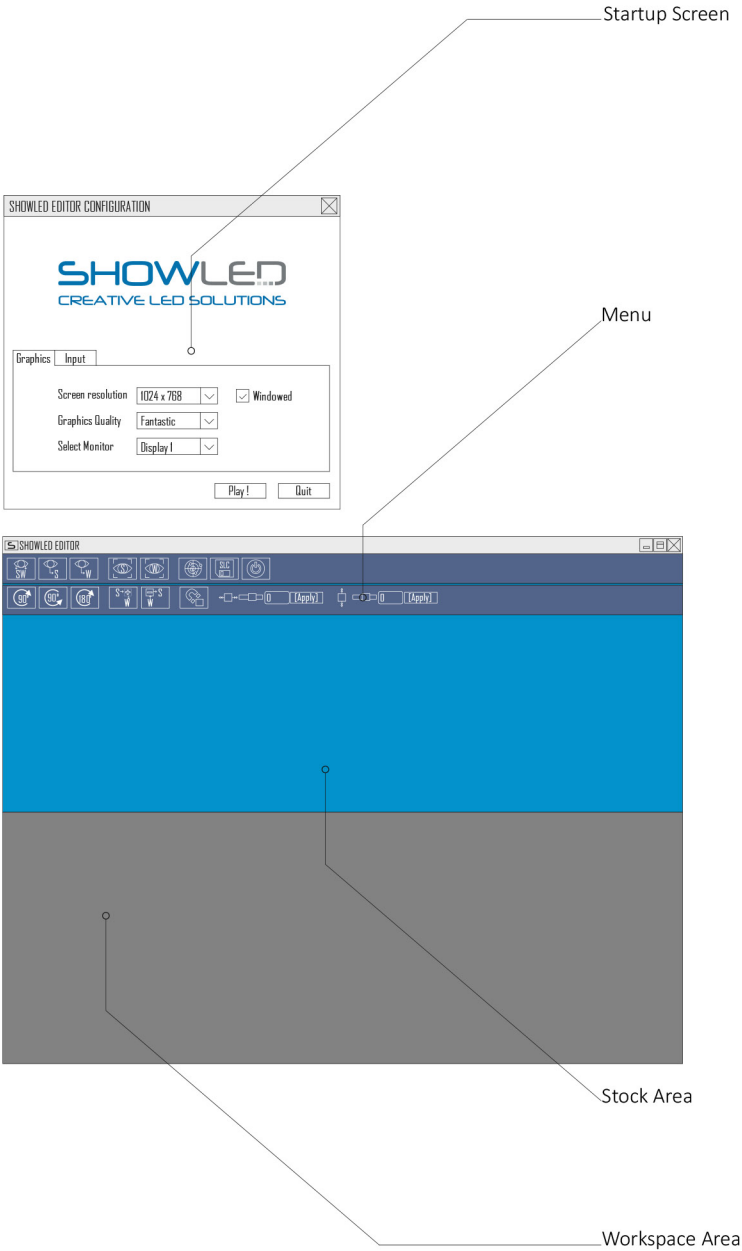
Alternate DNS server:

. . .

Change IP Address

Interface Overview

Menu Overview



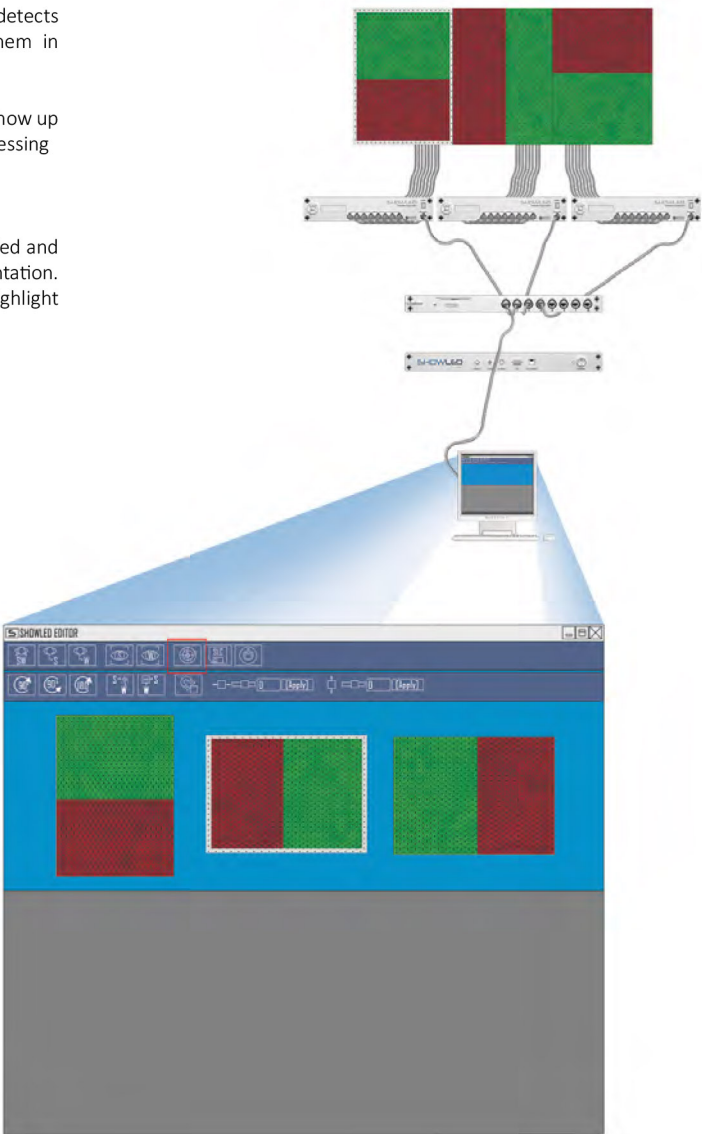
Connecting Panels

ShowLED Editor automatically detects connected panels and displays them in the stock area.

In case connected panel does not show up in the stock area, do a rescan by pressing

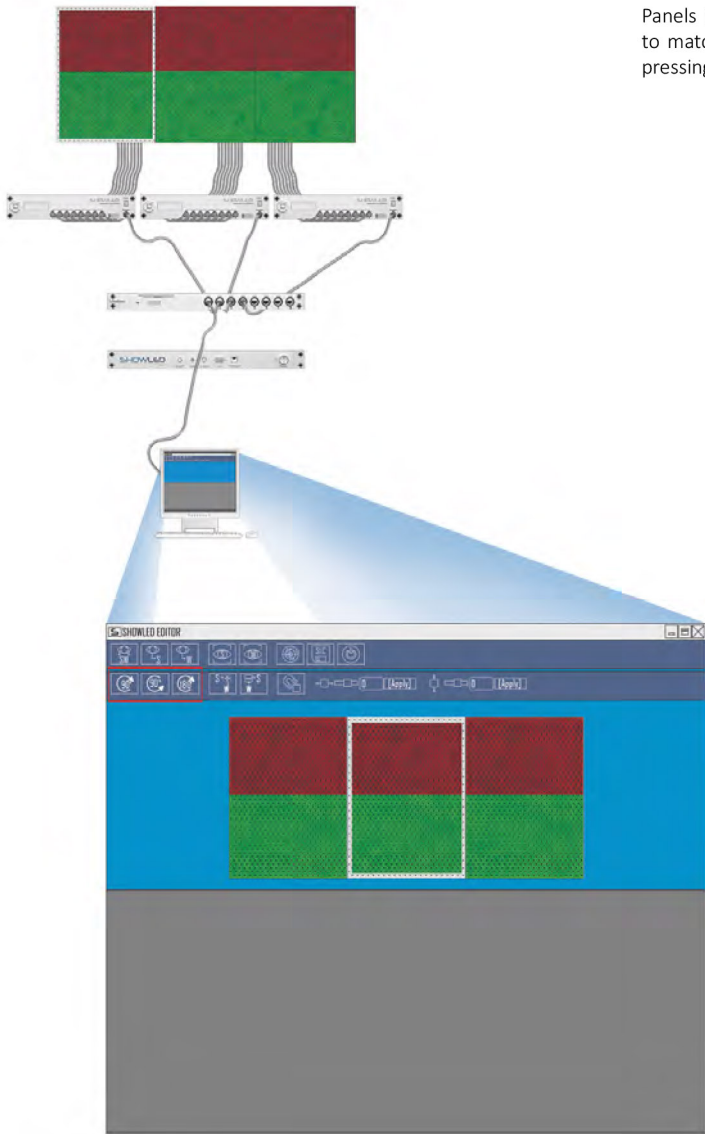


Connected panels will light up as Red and Green halves to identify their orientation. Panels highlighted in Editor also highlight the physical panels.



Rotating Panels

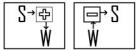
Panels in the stock area can be rotated to match with the connected panels by pressing



Moving Panels between Workspace and Stock Areas

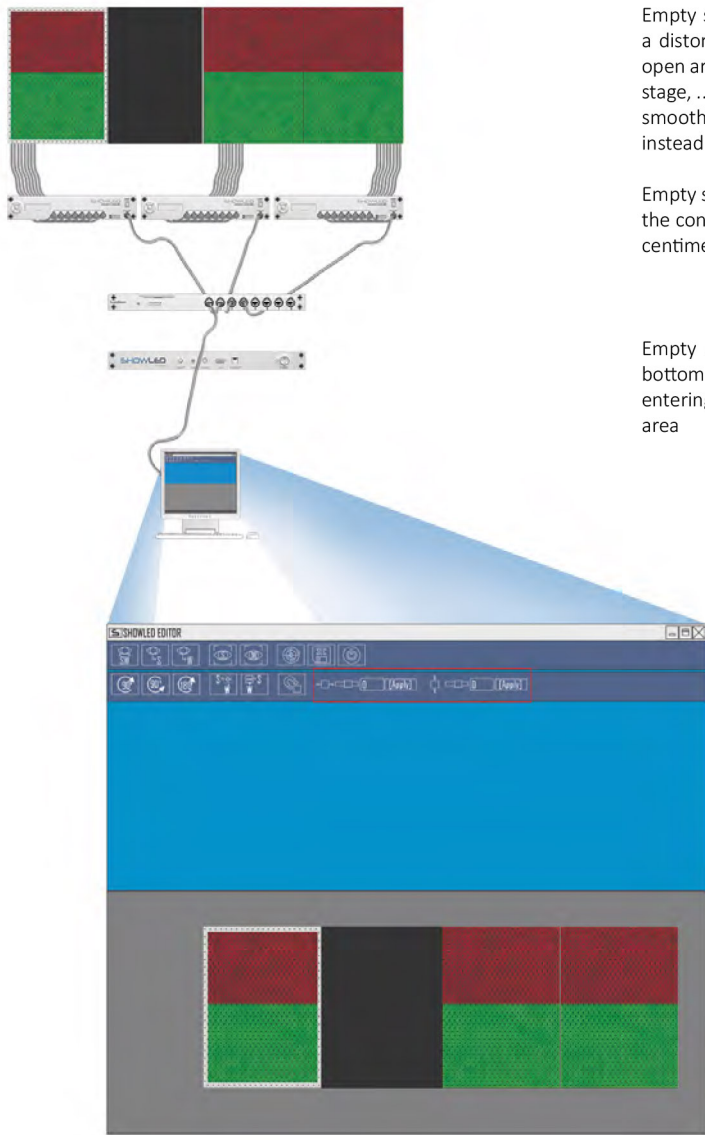
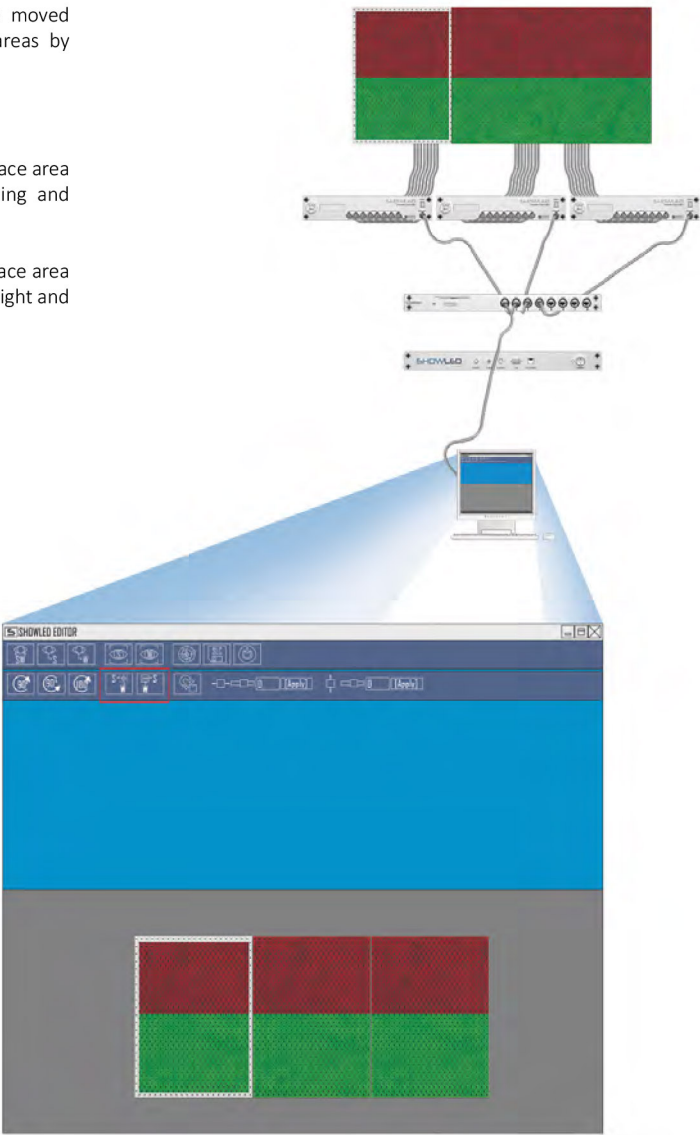
Empty spaces

Rotation finalized panels can be moved between stock and workspace areas by pressing



Order of the panels in the workspace area can be adjusted by simply clicking and dragging panels.

Move down the panels to workspace area as per physical order from left to right and top to bottom.



Empty spaces can be inserted to prevent a distorted view. It can be used to insert open areas between panels such as doors, stage, ...and still have the content run very smoothly over all the different panels instead of jumping from one to another.

Empty spaces can be added left or right of the connected panel by entering values in centimeters on below area



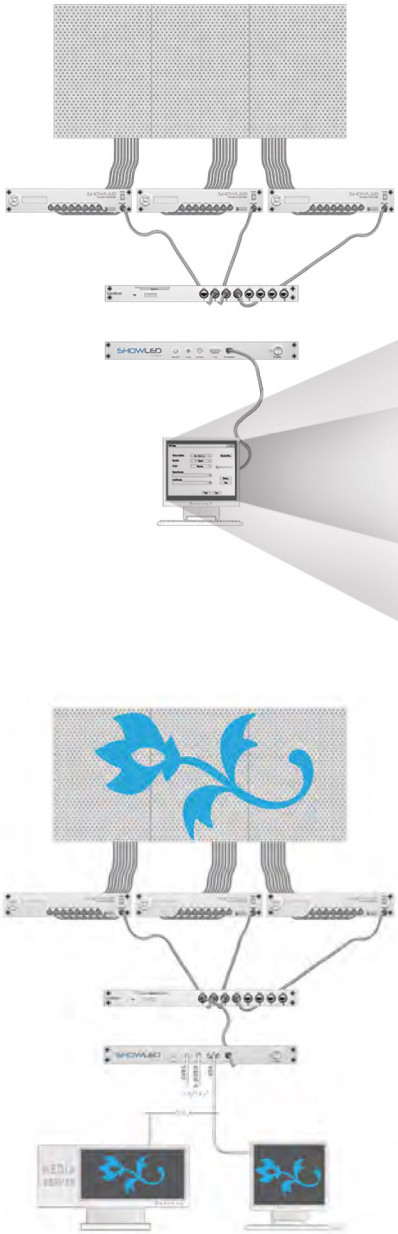
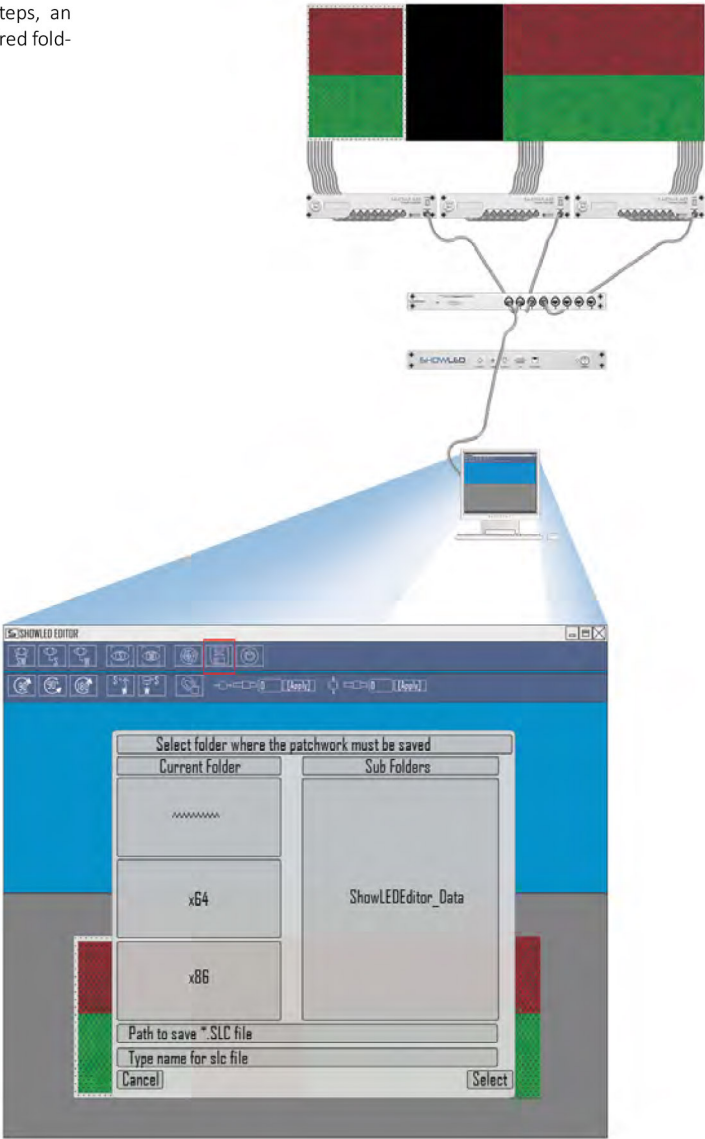
Empty spaces can be added to top or bottom of the connected panel by entering values in centimeters on below area





Saving \*.SLC files

After completing all required steps, an \*.slc file can be created into a desired folder by pressing



UPLOADING TO V-BOX  
PLAYING ANIMATION

Play



Connection to Upload

Run TFTP Client

Enter Details



Click 'upload now'

Upload will be completed at 100%

Connection for playback

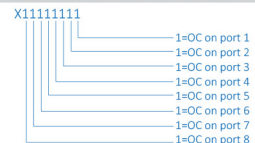
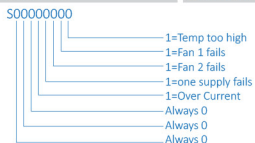
Start playing the content

Overview

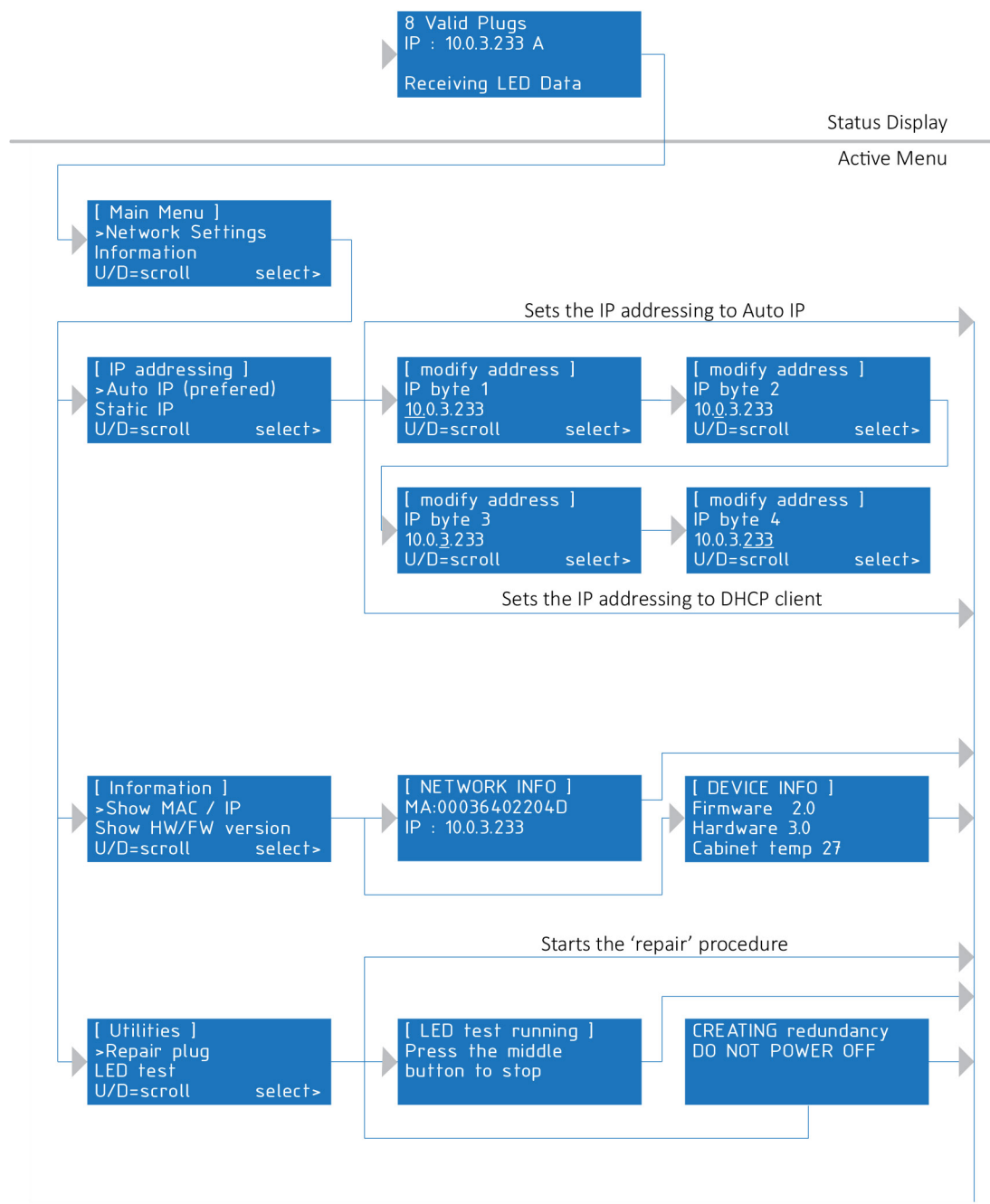


- NUMBER OF VALID PLUGS DETECTED  
*This should be the same amount of plugs connected to the controller*
- IP ADDRESS OF THE CONTROLLER ON THE NETWORK  
*IP address alphabetic suffix denotes type of addressing*  
A - Automatic IP addressing  
S - Static IP addressing  
D - Dynamic IP addressing
- WARNING MESSAGES  
*'Blank plugs detected', 'Make redundant now!'*
- SYSTEM MESSAGES  
*Messages can be status or error message*

| MESSAGE              | MEANING & SOLUTION   |
|----------------------|--|
| Receiving LED Data   | The controller receives Ethernet data meant for projection to the animation cloth connected to it.   |
| No Ethernet Link     | There is no working Ethernet link with this controller. Check cables and network gear to resolve   |
| DON'T HOT SWAP PLUGS | The controller has detected a power surge on one of his output ports. It's most probably caused by inserting a plug in an output port while the device is powered. It's advisable to only plug in connectors when the device is powered off. |
| OC on port xyz       | There is an overcurrent on the ports 'xyz'. See troubleshoot manual to resolve.  |
| One supply fails     | One of the internal power supplies fails. See troubleshoot manual to resolve.  |
| Fan 1 fails          | Fan 1 is jammed, broken or the cable has come loose.   |
| Fan 2 fails          | Fan 2 is jammed, broken or the cable has come loose.   |
| Fan 1&2 fails        | Both fans are jammed, broken or the cables have come loose.  |
| Temp too high        | The cabinet temp is too high. Make sure that the ventilation inlets (two sides) and ventilation outlets (back) are free.   |
| S00000000 X11111111  | When there is more than one error at same time this bit field notation is used.  |



Menu Structure



Introduction

With the help of ShowLED Filter;  
specific areas can be turned off as the  
unique number of a broken LED can be  
determined.

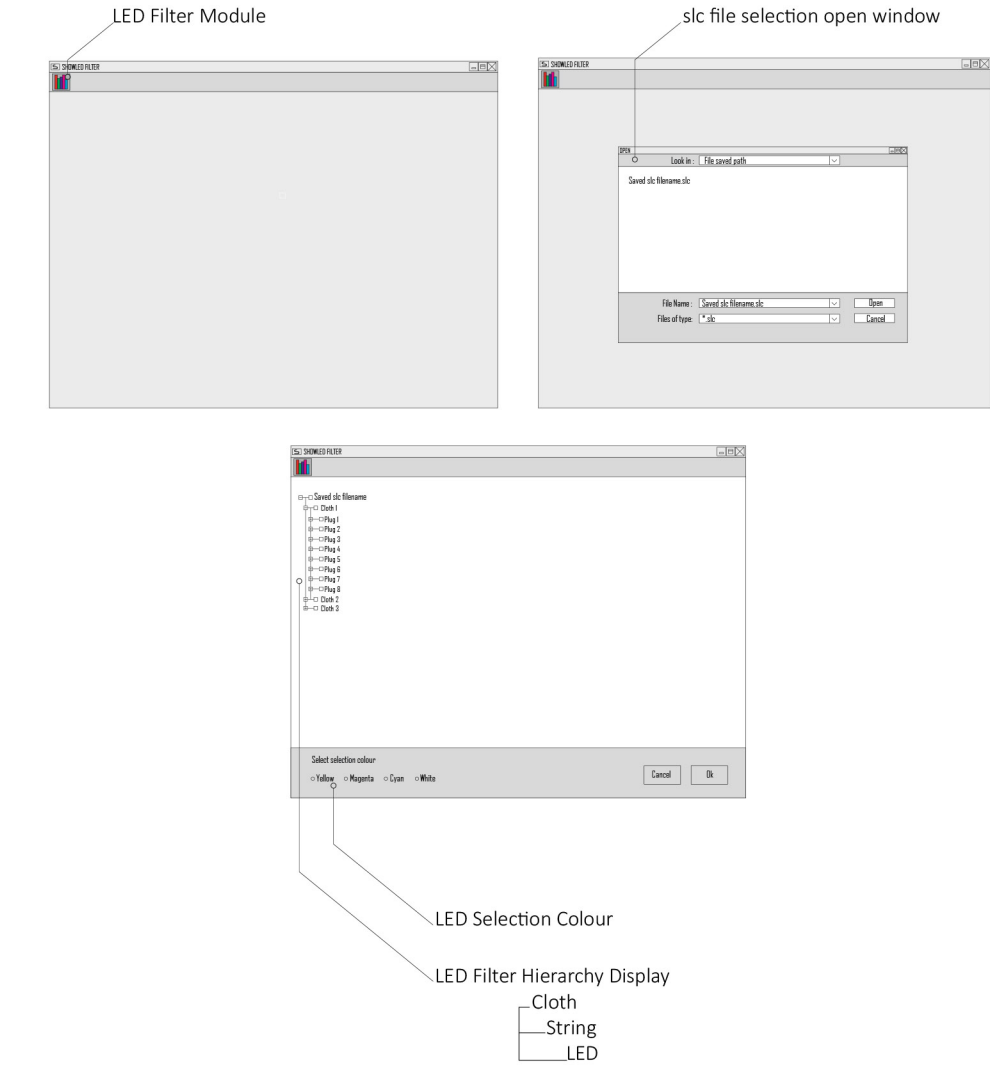
LED Filter Module

slc file selection open window

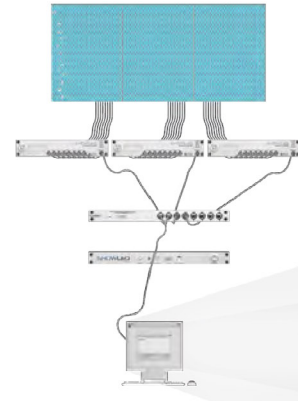
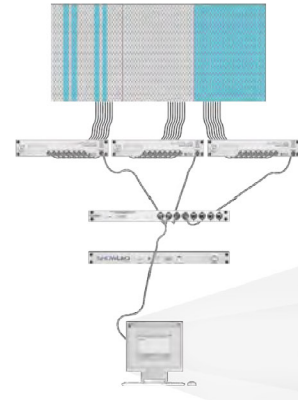
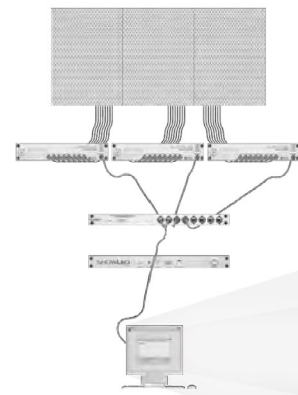
LED Selection Colour

LED Filter Hierarchy Display

- Cloth
- String
- LED



Connection for Configuration



Press  to select and open an slc file.



From the panels configuration heirarchy, either a cloth, string or an LED can be turned off/on by pressing space bar or mouse click on check box.



Each LED shares an unique number, this number is used as reference for replacement of broken LEDs.

After finishing the required configuration, press 'OK' to save a new slc file. Saved slc file has to be reloaded into the V-box before the changes will have effect.



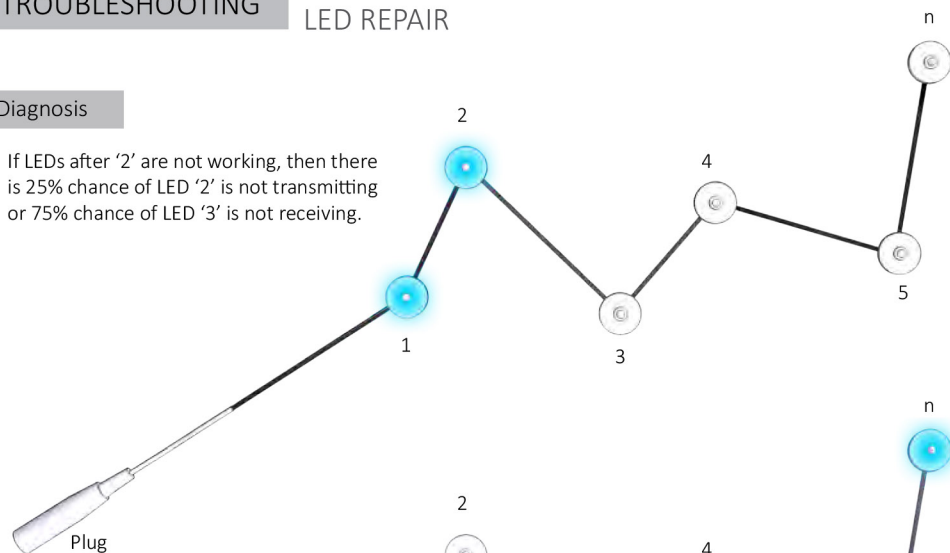


## TROUBLESHOOTING

### LED REPAIR

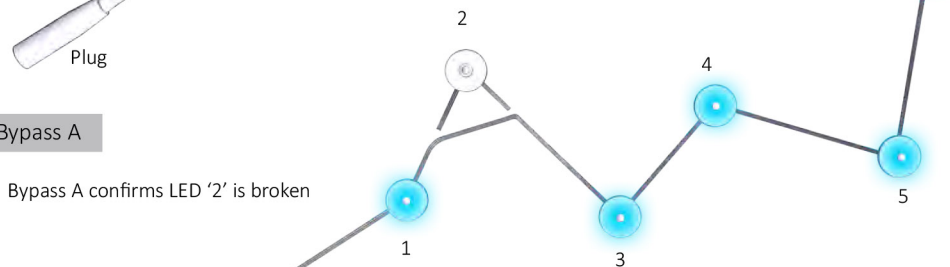
#### Diagnosis

If LEDs after '2' are not working, then there is 25% chance of LED '2' is not transmitting or 75% chance of LED '3' is not receiving.



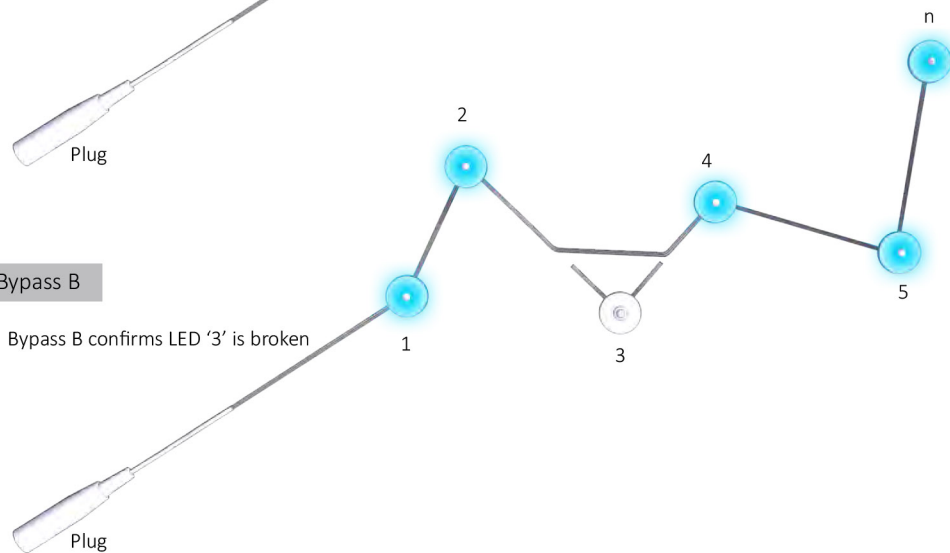
#### Bypass A

Bypass A confirms LED '2' is broken



#### Bypass B

Bypass B confirms LED '3' is broken



22

23

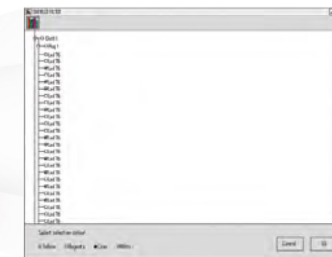
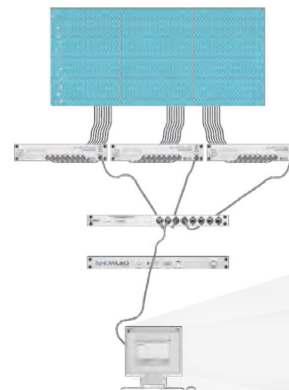


## TROUBLESHOOTING

### LED REPAIR

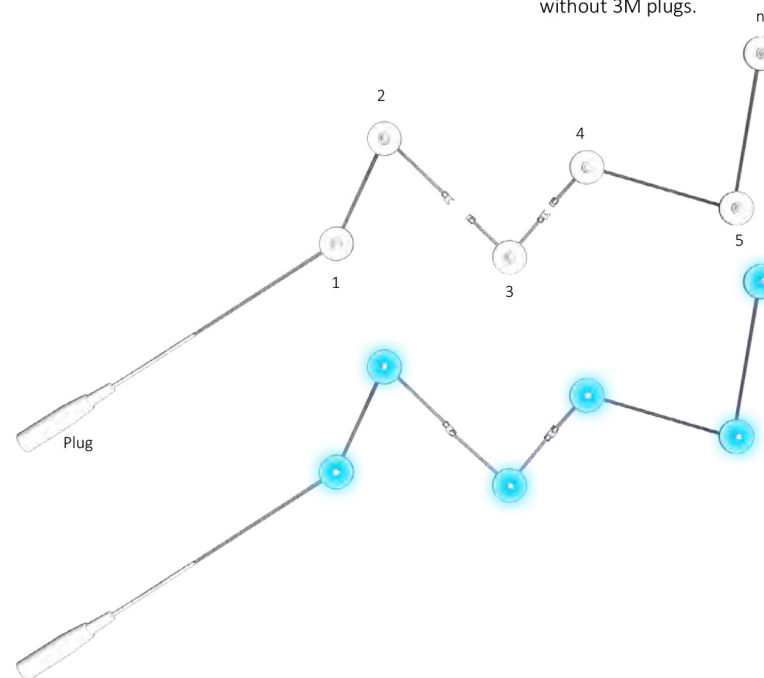
#### Identify and Email

Identify broken LED's unique number through ShowLED filter and mail to your ShowLED distributor.



#### Receiving Replacement

Replacement can be ordered with or without 3M plugs.





## TROUBLESHOOTING

### PLUG REPAIR

#### Make Sure

Plug is broken, not the output port on the controller.

#### Make Sure

Controller has firmware 2.0 or above.

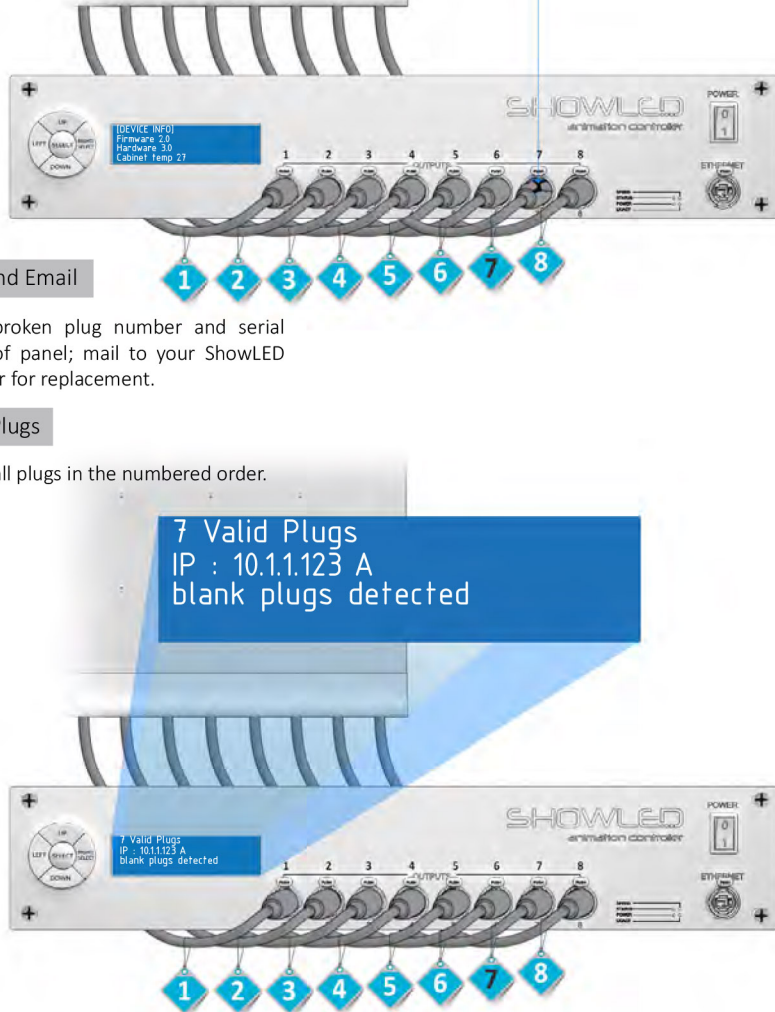
Plug physically broken or became not detectable

#### Identify and Email

Identify broken plug number and serial number of panel; mail to your ShowLED distributor for replacement.

#### Connect Plugs

Connect all plugs in the numbered order.



24

25



## TROUBLESHOOTING

### PLUG REPAIR

#### Repair Plugs

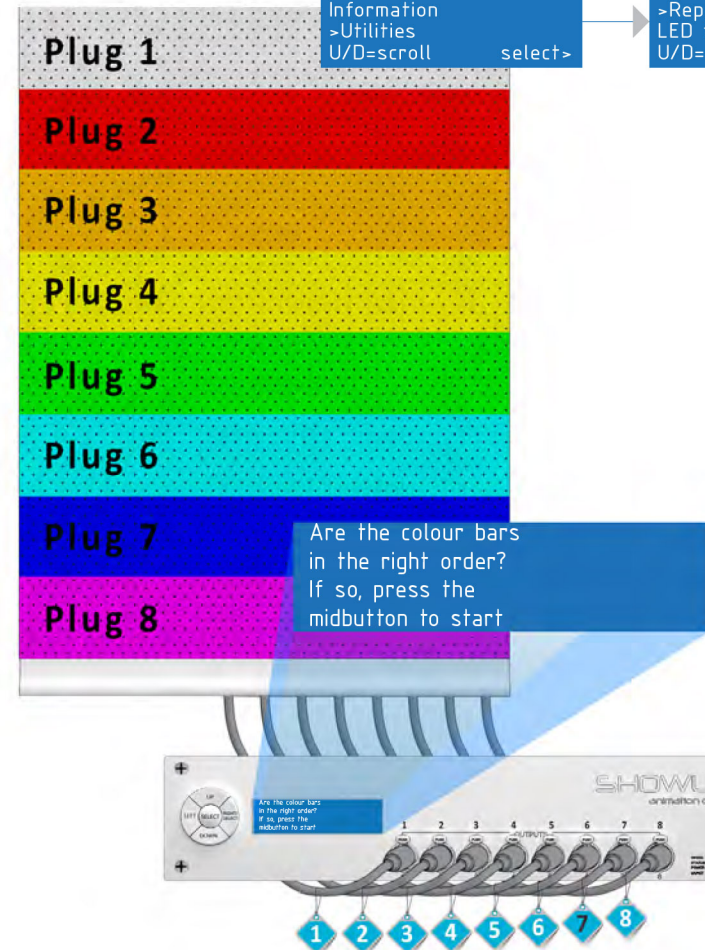
8 Valid Plugs  
IP : 10.0.3.233 A  
blank plugs detected

UNLOCK

[ Main Menu ]  
>Network Settings  
Information  
U/D=scroll select>

[ Main Menu ]  
Information  
>Utilities  
U/D=scroll select>

[ Utilities ]  
>Repair plug  
LED test  
U/D=scroll select>



#### Confirmation

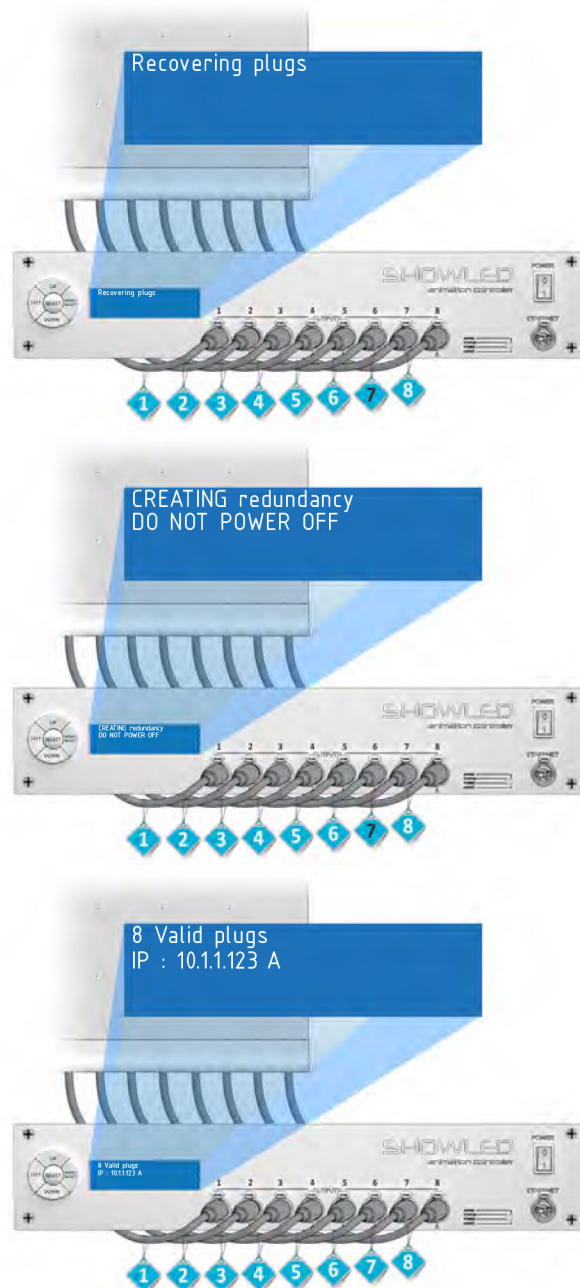
By pressing midbutton on controller keypad will start repairing the plugs



## TROUBLESHOOTING

### PLUG REPAIR

Repair Status



26

27

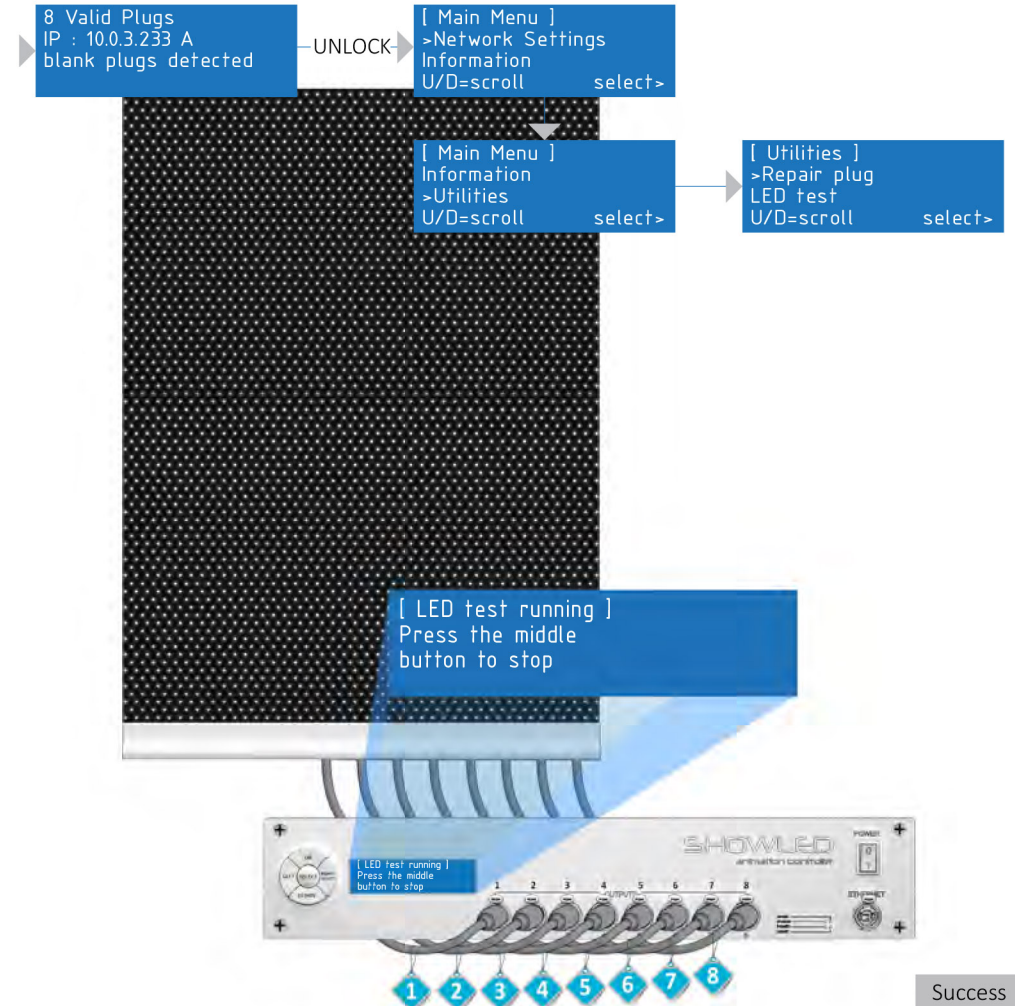


## TROUBLESHOOTING

### LED TEST

Process

LED test is a process done via controller to confirm connections, plugs, controllers, LEDs are working properly.



Success

Upon selecting LED test all LEDs will light up at 100% intensity in white colour.



**SHOWLED**  
CREATIVE LED SOLUTIONS

 **ROSE BRAND™**

NJ (800) 223-1624

CA (800) 360-5056

[www.rosebrand.com](http://www.rosebrand.com)